

Monolithic Crystal Filters

UM-1/HJ & UM-1S/HJ FAMILY

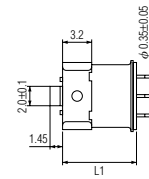
STANDARD SMD MCF

STANDARD SPECIFICATIONS

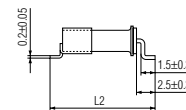
Part number	Nominal Frequency fo	Passband min.		Stopband max.		Attention Guaranteed min.		Ripple max.	Loss max.	Terminating Impedance	Coupling Capacitor	Operating Temperature	No. of Pole
	(MHz)	(dB)	(kHz)	(dB)	(kHz)	(dB)	(kHz)	(dB)	(dB)	(Ω//pF)	(pF)	(°C)	
21M7.5A(HJ)	21.4	3	±3.75	20	±18.0	35 50	+350 to +1000 -200 to -1000	0.5	1.5	850//6.0	—	-30 to +80	2
21M7.5B(HJ)	21.4	3	±3.75	40	±14.0	65 80	+350 to +1000 -200 to -1000	1.0	2.5	850//5.0	16	-30 to +80	4 (2 pcs.)
21M12A(HJ)	21.4	3	±6.0	20	±25.0	35 50	+350 to +1000 -200 to -1000	0.5	1.5	1200//3.0	—	-30 to +80	2
21M12B(HJ)	21.4	3	±6.0	40	±20.0	65 80	+350 to +1000 -200 to -1000	1.0	2.0	1200//2.5	10.5	-30 to +80	4 (2 pcs.)
21M15A(HJ)	21.4	3	±7.5	18	±25.0	35 50	+350 to +1000 -200 to -1000	0.5	1.5	1500//2.5	—	-30 to +80	2
21M15B(HJ)	21.4	3	±7.5	40	±25.0	65 80	+350 to +1000 -200 to -1000	1.0	2.0	1500//2.0	8	-30 to +80	4 (2 pcs.)
21M30A(HJ)	21.4	3	±15.0	15	±45.0	35 45	+350 to +1000 -300 to -1000	0.5	1.5	1500//1.0	—	-30 to +80	2
21M30B(HJ)	21.4	3	±15.0	40	±50.0	65 80	+350 to +1000 -250 to -1000	1.0	2.0	2000//0.5	3	-30 to +80	4 (2 pcs.)
45M7.5A(HJ)	45	3	±3.75	10	±12.5	65	-910	1.0	2.0	200//4.0	—	-30 to +80	2
45M7.5B(HJ)	45	3	±3.75	30	±12.5	90	±900 to ±1000	1.0	4.0	350//6.5	18	-30 to +80	4 (2 pcs.)
45M15A(HJ)	45	3	±7.5	15	±25.0	35 65	+900 to +1000 -900 to -1000	1.0	2.0	650//3.0	—	-30 to +80	2
45M15B(HJ)	45	3	±7.5	30	±25.0	90	±900 to ±1000	1.0	3.0	650//3.0	9	-30 to +80	4 (2 pcs.)
45M30A(HJ)	45	3	±15.0	15	±60.0	35 65	+900 to +1000 -900 to -1000	1.5	2.5	1200//0	—	-30 to +80	2
45M30B(HJ)	45	3	±15.0	30	±50.0	80	±900 to ±1000	1.0	3.0	1200//0.7	3.5	-30 to +80	4 (2 pcs.)
45M7.5A3(HJ)	45 (3rd OT)	3	±3.75	10	±12.5	35	±910	1.0	2.0	2000//−0.4	—	-30 to +80	2
45M7.5B3(HJ)	45 (3rd OT)	3	±3.75	30	±12.5	75	±910	1.0	4.0	3000//−0.3	−0.1	-30 to +80	4 (2 pcs.)
45M15A3(HJ)	45 (3rd OT)	3	±7.5	15	±25.0	35	±910	1.0	2.0	4000//−0.7	—	-30 to +80	2
45M15B3(HJ)	45 (3rd OT)	3	±7.5	30	±25.0	75	±910	1.0	4.0	4000//−0.8	−1.0	-30 to +80	4 (2 pcs.)
P/N	Contact us for other frequencies or other specifications												

PACKAGE DATA

Item	Package	UM-1 / 8HJ	UM-1 / 6HJ	UM-1 / 4HJ
		UM-1S / 8HJ	UM-1S / 6HJ	UM-1S / 4HJ
Cover		Metal	Metal	Metal
Base		Metal	Metal	Metal
Sealing		Resistance weld	Resistance weld	Resistance weld
Metal clamp		C5210R	C5210R	C5210R
Metal clamp plating		Gold	Gold	Gold
Terminal lead		Alloy (FeNiCo)	Alloy (FeNiCo)	Alloy (FeNiCo)
Terminal lead plating		Gold	Gold	Gold
RoHS		Compliant (Pb-free)	Compliant (Pb-free)	Compliant (Pb-free)

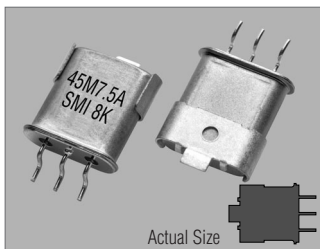


Package	L1	L2	H
UM-1/8HJ	7.8±0.2	11.5±0.3	3.1±0.2
UM-1/6HJ	5.8±0.2	9.7±0.3	3.1±0.2
UM-1/4HJ	4.4±0.2	8.3±0.3	3.1±0.2

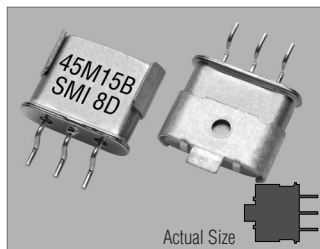


Package	L1	L2	H
UM-1S/8HJ	7.8±0.2	11.5±0.3	2.8±0.2
UM-1S/6HJ	5.8±0.2	9.7±0.3	2.8±0.2
UM-1S/4HJ	4.4±0.2	8.3±0.3	2.8±0.2

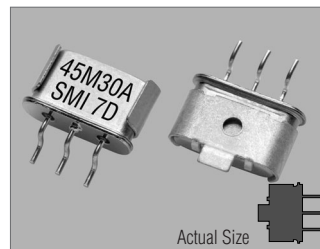
UM-1/8HJ & UM-1S/8HJ



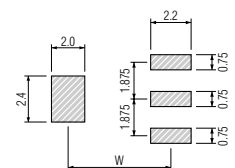
UM-1/6HJ & UM-1S/6HJ



UM-1/4HJ & UM-1S/4HJ

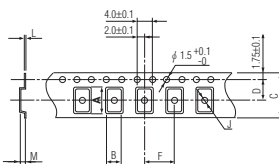


SOLDERING PATTERN



Holder	W
UM-1/8HJ & UM-1S/8HJ	10.0
UM-1/6HJ & UM-1S/6HJ	8.0
UM-1/4HJ & UM-1S/4HJ	6.6

TAPE SPECIFICATIONS



for UM-1/8HJ & UM-1S/8HJ

A	B	C	D	F	J	L	M	Reel Dia.	Qty/Reel
12.4	8.2	24.0	11.5	12.0	1.5	0.4	3.3	330	1000pcs

for UM-1/6HJ & UM-1S/6HJ

A	B	C	D	F	J	L	M	Reel Dia.	Qty/Reel
10.6	8.2	24.0	11.5	12.0	1.5	0.4	3.3	330	1000pcs

for UM-1/4HJ & UM-1S/4HJ

A	B	C	D	F	J	L	M	Reel Dia.	Qty/Reel
9.2	8.2	16.0	7.5	12.0	1.5	0.4	3.3	330	1000pcs