

Mögliche SMD-Bauformen

SMD Types Possible

Stabkerndrossel SMD mit Ansaugfläche

Rod core choke SMD version for pick and place



Applikation:
z.B. Automotive Antennenverstärker

Application:
e.g. Automotive Antenna Amplifier

Stabkerndrossel SMD mit Ansaugfläche

SMD Rod Core Choke for pick and place



Applikation:
z.B. Automotive Standheizung

Application:
e.g. Automotive Auxiliary Heating

Luftspule SMD

SMD Air Coil

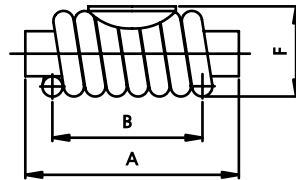
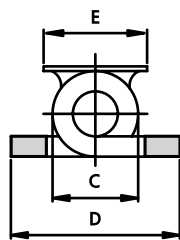


Applikation:
z.B. GSM Filterschaltung

Application:
e.g. GSM Filter Connection

Stabkerndrosseln
Verfügbare SMD-Bauformen

Rod Core Chokes
SMD Designs Available



Enden abisoliert und verzinnt /
ends stripped and tinned

Artikelnummer Order No.	Induktivität L [nH] Inductance L [nH]	I_{DCmax} [A]	Wickelsinn winding direction	A [mm]	B [mm]	C [mm]	D [mm]	E [mm]	F [mm]
5701 0008 303	2200	1,5	Links	10,0	-	2,5	4,0	Ohne ASF	-
5701 0009 403	-	-	Rechts	17,0	-	-	14,0	7,5	6,5
5701 0010 403	-	-	Links	17,0	-	-	14,0	7,5	6,5
5701 0011 403	-	-	Links	18,0	-	-	15,0	9,0	8,1
5701 0012 403	-	-	Links	19,0	-	-	16,0	9,0	7,6
5701 0013 403	-	-	Rechts	18,0	-	-	15,0	9,0	8,1
5701 0014 403	1600	-	Links	25,0	-	-	8,2	6,0	9,5
5701 0016 403	2400	40	Rechts	25,0	19,0	-	16,0	10,5	-
5701 0017 403	4100	5	Links	14,0	11,6	-	8,6	9,0	-
5701 0018 403	2000	5	Links	15,0	8,5	5,8	9,8	6,0	6,25
5701 0019 403	1600	5	Links	25,0	-	-	8,2	9,0	9,0