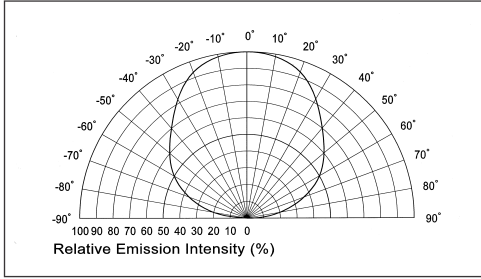




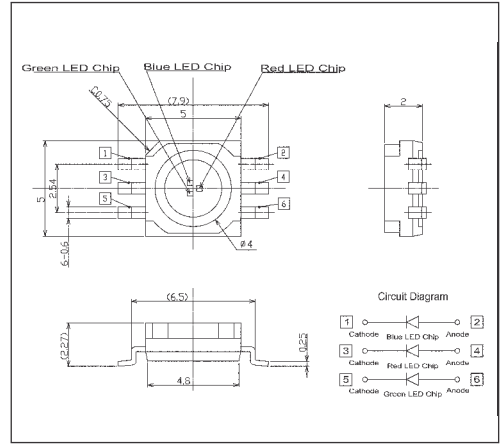
**Characteristics**

- High luminous 3 color LED
- High optical efficiency
- Flexible Design with 3 independent circuits
- Silicone encapsulation

**Directive Characteristics** (Ta=25°C)



**Package Outlines** (mm)

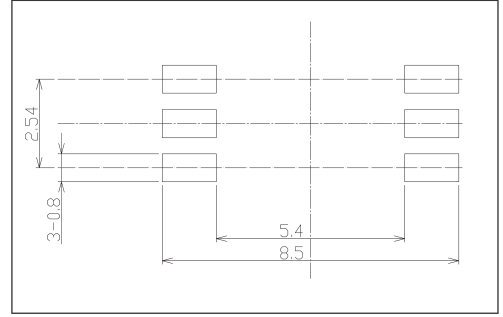


**Absolute Rating Limits**

(Ta=25°C)

Item	Symbol	Value			Unit
		Red	Green	Blue	
Power Dissipation per Lamp	P <sub>D</sub>	190			mW
DC Forward Current per Chip	I <sub>F</sub>	55	35	35	mA
DC Reverse Voltage per Chip	V <sub>R</sub>	5			V
Operating Temperature	T <sub>opr</sub>	-40 ~ +100			°C
Storage Temperature	T <sub>stg</sub>	-40 ~ +100			°C

**Recommended Soldering Pattern** (mm)



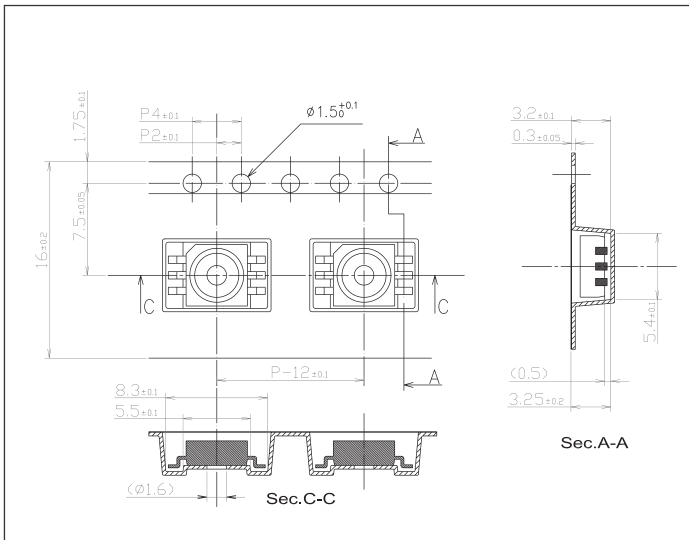
**Electrical and Optical Characteristics**

(Ta=25°C)

Part No.		Luminous Intensity [mcd]			Forward Voltage [V]			Wavelength Characteristics [nm]			
		Typ.	Min.	I <sub>F</sub> [mA]	Typ.	Max.	I <sub>F</sub> [mA]	λ <sub>D</sub> Min.	λ <sub>D</sub> Max.	Δλ Typ.	I <sub>F</sub> [mA]
PX-1T450-M	Red	300	190	20	2.3	2.8	20	624	635	20	20
	Green	1000	600	20	3.5	4.0	20	520	540	30	20
	Blue	200	140	20	3.4	4.2	20	463	470	20	20

**Taping Outline Dimensions**

(Unit: mm)



**Luminous Intensity Ranks**

(Ta=25°C, I<sub>F</sub>=20mA)

Rank	Red	Green	Blue
1	190-270	600-810	140-190
2			190-260
3			260-360
4			140-190
5			190-260
6	1100-1500	810-1100	260-360
7			140-190
8			190-260
9			260-360
10			140-190
11	270-370	600-810	190-260
12			260-360
13			140-190
14			190-260
15			260-360
16	1100-1500	810-1100	140-190
17			190-260
18			260-360
19			140-190
20			190-260
21	370-520	600-810	260-360
22			140-190
23			190-260
24			260-360
25			140-190
26	1100-1500	810-1100	190-260
27			260-360

**Package**

Reel 2000 pieces / reel

Typical Characteristics

