

2.5 x 2.0mm LOW CURRENT CONSUMPTION LOW PHASE NOISE

SMD TRI-STATE ENABLE/DISABLE OSCILLATORS
SEAM SEALED CERAMIC PACKAGE
Pb-free & RoHS compliant

SRP1Y · SRN1Y · SRS1Y · SRW1Y (Low Phase Noise type)

FREQUENCY STABILITY

MODEL	FREQUENCY STABILITY
SR1P1BY · SR1N1BY · SR1S1BY · SR1W1BY	± 100PPM / -20 ~ +70
SR2P1BY · SR2N1BY · SR2S1BY · SR2W1BY	± 50PPM / -20 ~ +70
SR8P1BY · SR8N1BY · SR8S1BY · SR8W1BY	± 30PPM / -20 ~ +70
SR1P1RY · SR1N1RY · SR1S1RY · SR1W1RY	± 100PPM / -40 ~ +85
SR2P1RY · SR2N1RY · SR2S1RY · SR2W1RY	± 50PPM / -40 ~ +85
SR8P1RY · SR8N1RY · SR8S1RY · SR8W1RY	± 30PPM / -40 ~ +85

OPERATING CONDITIONS

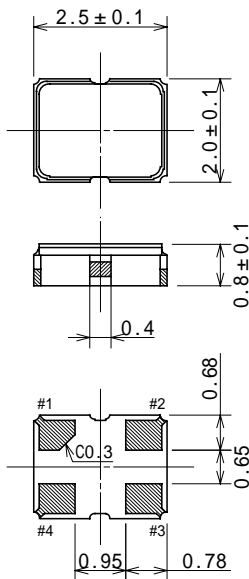
Operating Temperature	-20 ~ +70 · -40 ~ +85	
Storage Temperature	-55 ~ +100	
Supply Voltage (V _{DD})	SRP1Y	+3.3V ± 5%
	SRN1Y	+3.0V ± 5%
	SRS1Y	+2.5V ± 5%
	SRW1Y	+1.8V ± 5%

ELECTRICAL CHARACTERISTICS (T_a=+25 °C; V_{DD}= 3.3V, 3.3V, 2.5V & 1.8V, C_L=15pF)

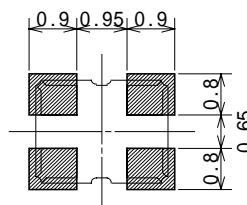
PARAMETERS	CONDITIONS	SPECIFICATIONS			
		SRP1Y	SRN1Y	SRS1Y	SRW1Y
Input Current (I _{DD})		7mA Max.	6.5mA Max.	5.5mA Max.	3.0mA Max.
Frequency Range (MHz)	All Condition (Note)	26.000 ~ 44.000			
Frequency Stability		± 30PPM ~ ± 100PPM			
Driving Ability	CMOS	15pF Max.			
Output Voltage (V _{OL})	"0" Level	10% V _{DD} Max.			
	(V _{OH}) "1" Level	90% V _{DD} Min.			
Rise Time (T _R)	10% to 90% V _{DD}	10nS Max.			
Fall Time (T _F)	90% to 10% V _{DD}	10nS Max.			
Symmetry	@ 50% V _{DD}	45/55%		40/60%	
Phase Noise F _{out} ± 10kHz	27.000MHz	-155dBc/Hz TYP.			
	40.000MHz	-162dBc/Hz TYP.			

Note: Inclusive of operating temperature range, input, voltage change, load change.

DIMENSIONS (mm)



RECOMMENDED SOLDER PAD LAYOUT



ENABLE/DISABLE FUNCTION	
INH (Pin #1)	OUTPUT (Pin #3)
Open	Active
"1" (V _{IH} 0.8V _{DD})	Active
"0" (V _{IL} 0.2V _{DD})	High Z

Terminal	Connection
#1	INH
#2	GND
#3	OUTPUT
#4	+V _{DD}

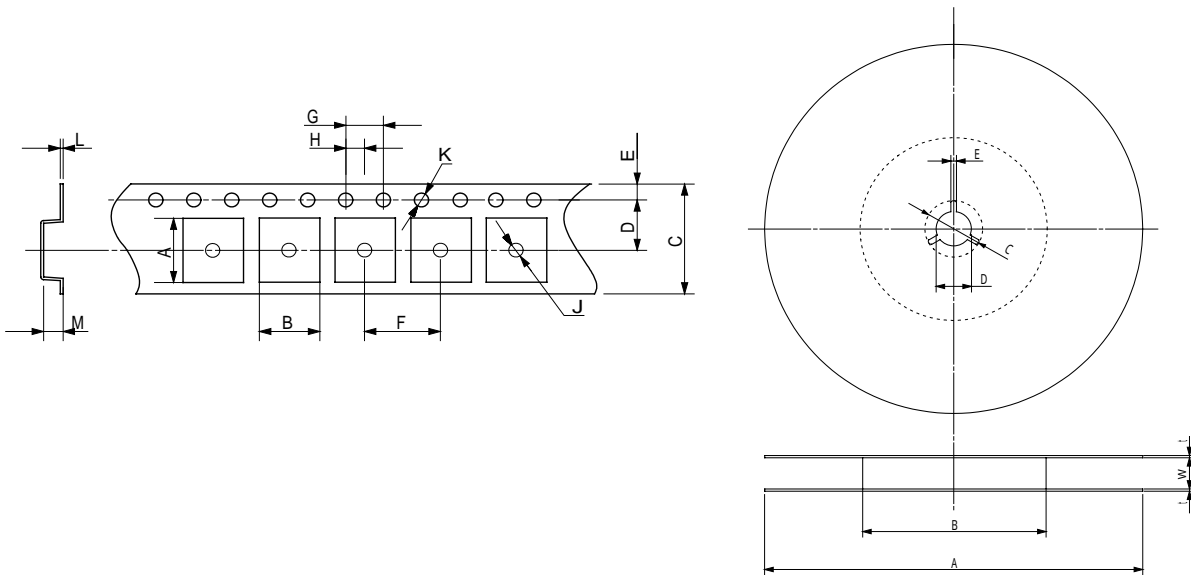


All specifications subject to change without notice.

2009.3.06 Ver-1R3

TAPE AND REEL SPECIFICATIONS

SRP1Y · SRN1Y · SRS1Y · SRW1Y



TAPE:

UNIT:mm

A	B	C	D	E	F	G	H	J	K	L	M
2.7	2.25	8.0	3.5	1.75	4.0	4.0	2.0	1.1	1.55	0.25	1.15

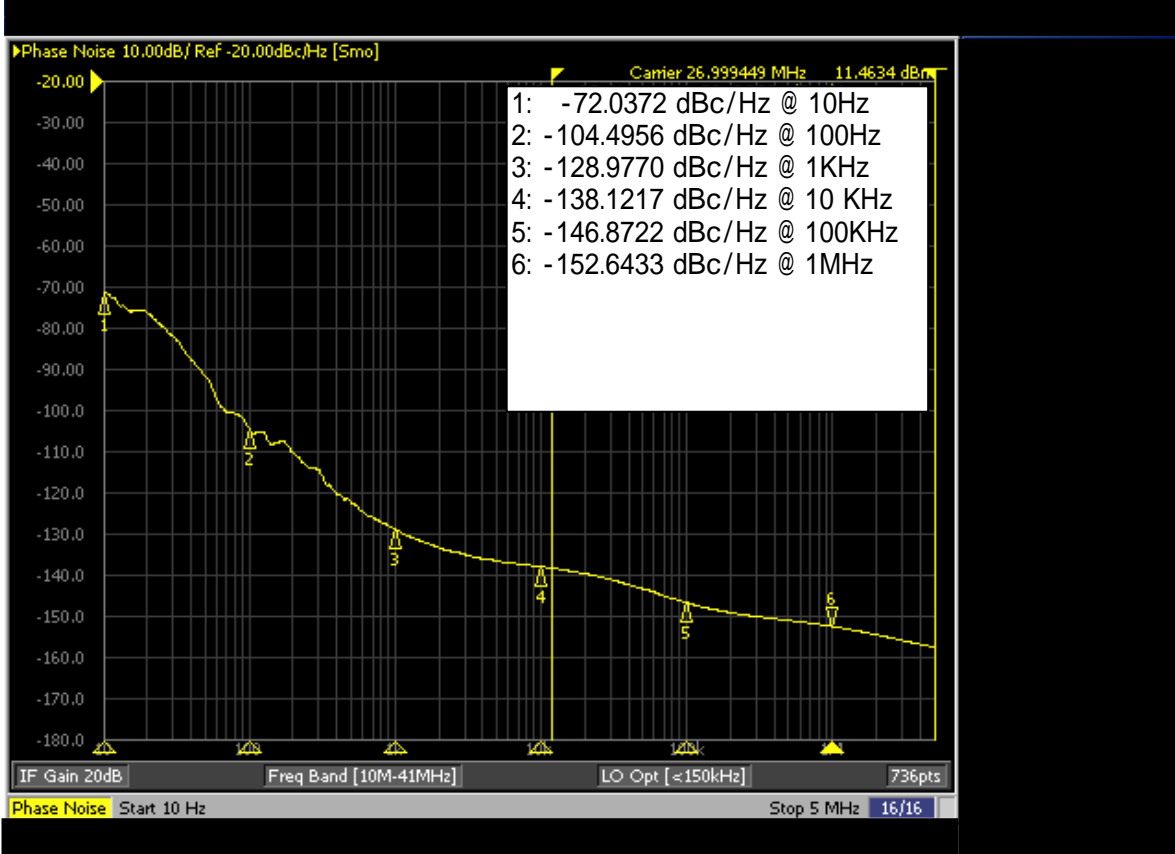
REEL:

UNIT:mm

A	B	C	D	E	W	t
180	60	21	13	2.0	9	2.5

QTY/REEL
1,000PCS

+3.3V_27.000MHz SRP1 normal type



+3.3V_27.000MHz SRP1Y series

