

Wolfgang Knap  
Gesellschaft m.b.H. & Co.KG

A-1130 Wien  
Lilienberggasse 13  
Tel.: +43-1-403 08 12  
Fax: +43-1-408 72 13  
e-mail: info@knap.at  
http://www.knap.at

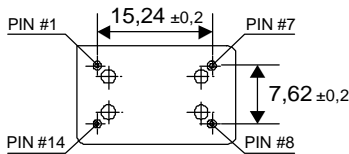
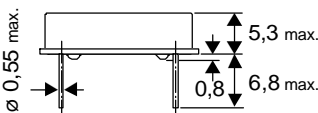
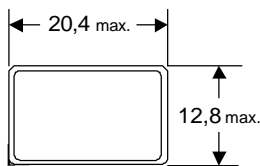
**SMI**

**VOLTAGE CONTROLLED CRYSTAL-OSCILLATOR  
SXO-3000V**



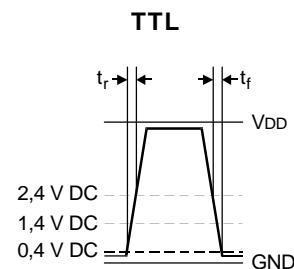
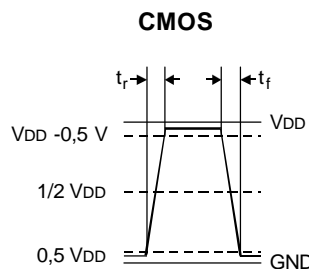
Part No.	SXO-3025V	SXO-3050V
<b>Frequency Range</b>	500 kHz to 38 MHz	
<b>Frequency Stability</b> temperature range at +5V ( $V_C=+2,5V \pm 0,5V$ ) input voltage change aging	$\pm 25$ ppm ( $\pm 0,0025\%$ )  $\pm 5$ ppm $\pm 5$ ppm/year at +25°C	$\pm 50$ ppm ( $\pm 0,005\%$ )  $\pm 5$ ppm $\pm 5$ ppm/year at +25°C
<b>Operating Conditions</b> Operating Temperature Storage Temperature Input Voltage ( $V_{DD}$ ) Control Voltage ( $V_C$ )	-10°C to +70°C -55°C to +125°C +5V DC $\pm 0,5V$ +2,5V DC $\pm 2,0V$	
<b>Input Current</b>	15 mA max.	
<b>Output (-10°C to +70°C)</b>  Symmetry Rise and fall times 0,4V to 2,4V DC level or 0,5V to $V_{DD}$ -0,5V DC  "0" level "1" level Load	50% $\pm 10\%$ at $\frac{1}{2} V_{DD}$ or +1,4V DC level  10 ns max. 500 kHz to 20,0 MHz 8 ns max. 20,0 MHz to 38,0 MHz  +0,5V (CMOS) or +0,4V max. (TTL) $V_{DD}$ -0,5V min. (CMOS) or +2,4V min. (TTL) 15 pF (CMOS) or 1 to 2 TTL gates (TTL)	
<b>Frequency Control</b> at $V_{DD}$ ( $V_C = +2,5V$ DC $\pm 2,0V$ )	$\pm 50$ ppm SXO-3000VA $\pm 100$ ppm SXO-3000VB $\pm 150$ ppm SXO-3000VC	
<b>Start-up Time</b>	10 ms max. 8,0 to 20,0 MHz 7 ms max. 20,0 to 38,0 MHz	

**OUTLINE DIMENSIONS (mm)**



PIN	CONNECTION
1	$V_C$
7	GND
8	OUTPUT
14	$V_{CC}$

**OUTPUT WAVEFORM**



**TEST CIRCUIT CMOS**

