

Wolfgang Knap
Gesellschaft m.b.H. & Co KG

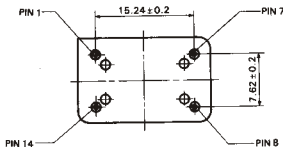
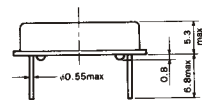
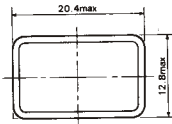
A-1130 Wien
Lilienberggasse 13
Tel.: +43-1-403 08 12
Fax: +43-1-408 72 13
e-mail: info@knap.at
http://www.knap.at

SMI

HIGH SPEED CMOS TTL OUTPUT TRI STATE LOGIC in FULL / HALF SIZE DIP PACKAGE

SXO-4000FL

FIG.173

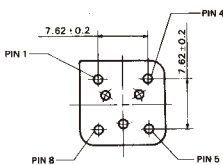
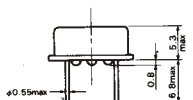
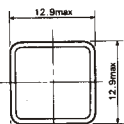


PIN	CONNECTION
1	"L" (OV) "H" (+5V) or OPEN
7	GND
8	Z OUTPUT
14	Vcc

Z : high impedance

SXO-4000HL

FIG.174



PIN	CONNECTION
1	"L" (OV) "H" (+5V) or OPEN
4	GND
5	Z OUTPUT
8	Vcc

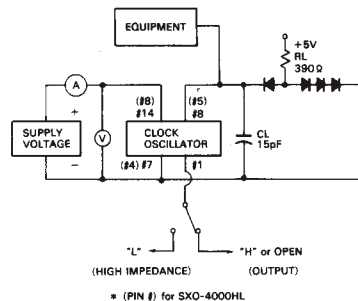
Z : high impedance

Part No.	SXO-4000FL	SXO-4000HL
Frequency Range	3.500 MHz to 70.000 MHz	
Frequency Stability	SXO-4050FL... ±50 ppm (±0.005%) SXO-4100FL...±100 ppm (±0.01%) over all conditions	SXO-4050HL... ±50 ppm (±0.005%) SXO-4100HL...±100 ppm (±0.01%) over all conditions
Operating Conditions	Operating temperature 0°C to +70°C Storage temperature -50°C to +125°C Input voltage (Vcc) +5V DC ±0.5V	
Input Current	66 mA max.	
Output (0°C to +70°C)	Symmetry SXO-4000FL ...50% ±10% at 1/2Vcc level SXO-4000FL (D)...50% ±5% at 1/2Vcc level SXO-4000HL ...50% ±10% at 1/2Vcc level SXO-4000HL (D)...50% ±5% at 1/2Vcc level Rise and fall times (0.4V to 2.4V DC level) (0.5V to Vcc-0.5V DC level) "0" level "1" level Load 6 ns max. +0.4V max. (TTL) +0.5V max. (CMOS) +2.4V min. (TTL) Vcc-0.5V min. (CMOS) 1 to 10 TTL gates (TTL)3.500 MHz to 70.000 MHz 30 pF (CMOS)3.500 MHz to 49.999 MHz 20 pF (CMOS)50.00 MHz to 70.000 MHz	
Enable/Disable Phase Delay Time	100 ns max.	

Table 27

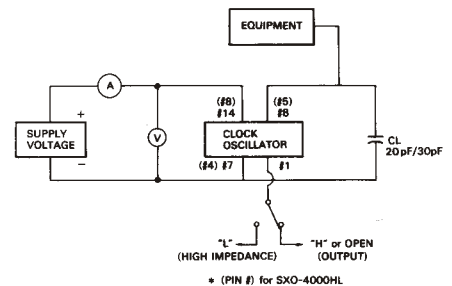
TEST CIRCUIT TTL

FIG.175



TEST CIRCUIT CMOS

FIG.177



OUTPUT WAVEFORM

FIG.176

