

Wolfgang Knap
Gesellschaft m.b.H. & Co.KG

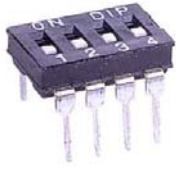


A-1130 Wien
Lilienberggasse 13
Tel.: +43-1-403 08 12
Fax: +43-1-408 72 13
e-mail: info@knap.at
http://www.knap.at



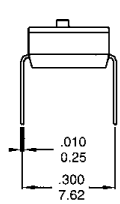
DIP-Switch 1-10 Position

DI Series

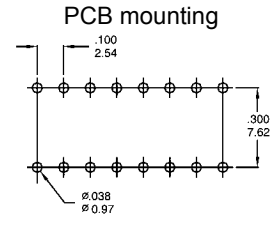
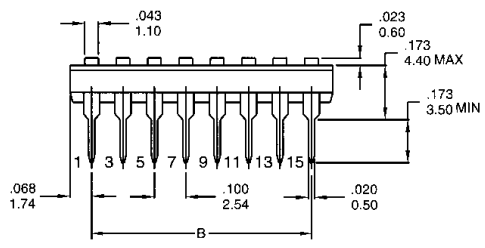
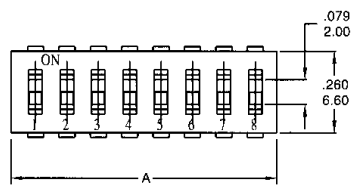
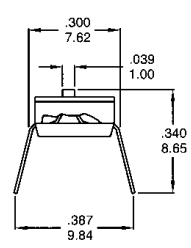


contact rating:	switch 25 mA @ 24 VDC, carry 100 mA @ 50VDC
insulation resistance:	100 MΩ min @ 500 VDC
contact resistance:	initial 20 mΩ @ 2-4 VDC @ 100 mA after life 20 mΩ @ 2-4 VDC @ 100 mA
operating life:	2000 make-and-break cycle each circuit
operating force:	1000 gf max.
actuator travel:	1,0 mm typ.
dielectric strength:	500 V rms min @ sea level between adjacent terminals
capacitance:	5 pF max. between adjacent terminals
temperature range:	operating and storage -40 to +85°C
vibration:	MIL-STD-202F, method 201A
shock:	MIL-STD-202F, method 213B, condition A
pin plating:	tin plated
soldering recommendation:	wave +260°C for 5 s 30 W hand soldering iron +320°C for 2 s typical keep all switches in the OFF position during soldering and cleaning process!

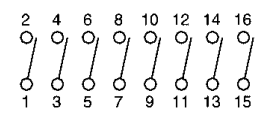
straight "H"



splay "S" for IC machine insertion



schematic



positions	1	2	4	6	8	10
"A"	mm 3,84 (inch) (0,137)	mm 6,02 (inch) (0,237)	mm 11,10 (inch) (0,437)	mm 16,18 (inch) (0,637)	mm 21,26 (inch) (0,837)	mm 26,34 (inch) (1,037)
"B"	mm (inch)	mm 2,54 (inch) (0,100)	mm 7,62 (inch) (0,300)	mm 12,70 (inch) (0,500)	mm 17,78 (inch) (0,700)	mm 22,86 (inch) (0,900)

model no.	actuator	positions	pin spacing	seal
DI	— none = raised R = recessed	— — 01, 02, 04, 06, 08, 10	— H = 7,62 mm straight pin S = 9,84 mm splay IC pin	— none = standard tube T = top tape seal *)

*) top tape seal is not available for 01 position or extended actuator