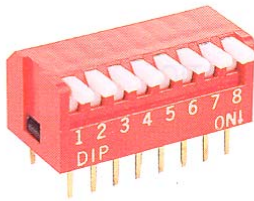


Piano-DIP-Switch DP Series



- SWITCH FUNCTION:
SPST, 2 thru 12 positions
- CONTACT RATING:
per switch 25 mA @ 24 VDC
- INSULATION RESISTANCE:
100 MΩ min. @ 500 VDC
- CONTACT RESISTANCE:
 - initial: 50 mΩ @ 24 VDC @ 100 mA
 - after life: 100 mΩ @ 24 VDC @ 100 mA
- OPERATING LIFE:
2000 make-and-break cycle each circuit
- OPERATING FORCE:
400 gf max.
- ACTUATOR TRAVEL:
2,0 mm typical
- DIELECTRIC STRENGTH:
500 V RMS min. @ sea level, between adjacent terminals

HOW TO ORDER

Actuator	Number of Positions	OFF Position	Seal
DP	- □ - □□	- □ - □	- □ - V
N = short L = long	02 03 04 05 06 07 08 09 10 12	N = topside OFF U = topside OFF	(none) = standard T = top tape seal V = leadfree solderable

SOLDERING PROCESS

Keep all switch contacts in their "OFF" position for all operations.

WAVE SOLDERING: Recommended temperature at 260°C max. 5 seconds for through hole type.

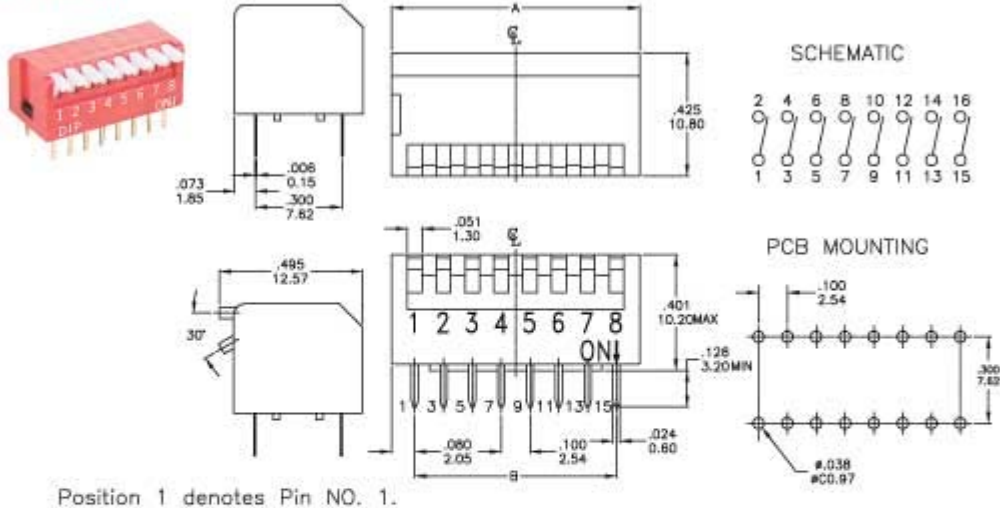
HAND SOLDERING: Use a soldering iron of 30 watts, controlled at 350°C approximately max. 5 seconds.

Make sure switch is in "OFF" position during soldering process, or it will decrease the operating force and meanwhile increase the contact resistance.

Do not wash the switch body except top tape sealed type, which suitable for spray cleaning method from top of the switch.

MODEL OPTIONS

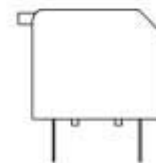
1 PC PIN



ACTUATOR OPTIONS



SHORT KEY
TOPSIDE "ON"



LONG KEY
TOPSIDE "ON"

NUMBER OF POSITIONS

Positions	2	3	4	5	6	7	8	9	10	12
"A" Dimension	6.64 (.261)	9.18 (.361)	11.72 (.461)	14.26 (.561)	16.8 (.661)	19.34 (.761)	21.88 (.861)	24.42 (.961)	26.96 (1.061)	32.04 (1.261)
"B" Dimension	2.54 (.100)	5.08 (.200)	7.62 (.300)	10.16 (.400)	12.7 (.500)	15.24 (.600)	17.78 (.700)	20.32 (.800)	22.86 (.900)	27.94 (1.100)