



SPECIFICATIONS

RATING: 50mA, 12V DC

CONTACT RESISTANCE: 100 mΩ MAX.

INSULATION RESISTANCE: 100 MΩ MIN.

MECHANICAL LIFE: 300,000 cycles.

OPERATING FORCE: 160±50g

STROKE: 0.25±0.10mm

OPERATING TEMPERATURE RANGE : -20°C to 70°C

MATERIALS

BASE: High Temp Thermoplastic PA66, Black.

CAP: High Temp Thermoplastic PA66, White.

CAP LOCK: High Temp Thermoplastic PC, White.

STEM: High Temp Thermoplastic PBT.

CONTACT : Stainless Steel SUS301, With silver cladding

TERMINALS : Brass, With silver plating.

HOW TO ORDER

PROD. NO. : M **6 - H** **T 2** **Q A**

=Without LED

L=TACT Switch +LED

Solder Type:

H= Through hole

0=Without Cap

2= Cap Type : Round

Cap Finish

See Note

Operation Force:

2 = 160gf

=Without LED

LED Color

B=Blue Y=Yellow G=Green R=Red

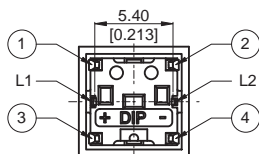
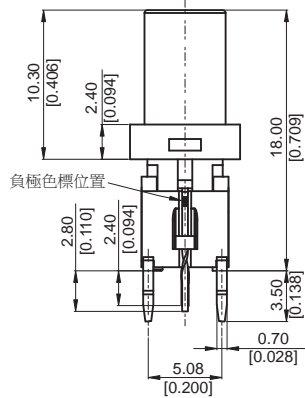
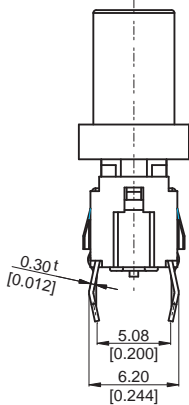
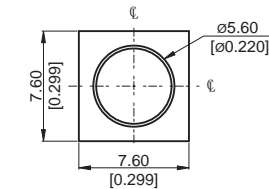
Q=Halogen Free

Package:

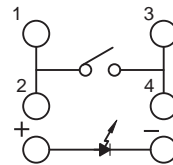
A= TRAY

DIMENSION

ML6-H2T2BQA



CIRCUIT



P.C.B LAYOUT

