

● SPECIFICATIONS

MECHANICAL

Mechanical Life: 10,000 operation cycles.
 Operation Force: 350gf.
 Operation Temperature Range: -20°C to +70°C
 Storage Temperature Range: -40°C to +85°C.
 Vibration Test: MIL-STD-202F METHOD 201A.
 Frequency: 10-55-10Hz / 1minute.
 Directions: X, Y, Z, three mutually
 Perpendicular directions.
 Time: 2 hours each direction.
 High reliability.

Shock Test: MIL-STD-202F METHOD 213B.
 CONDITION A.
 Gravity: 50G (peak value), 11msec.
 Direction and times: 6 sides and 3 times
 in each direction.

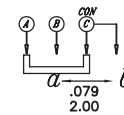
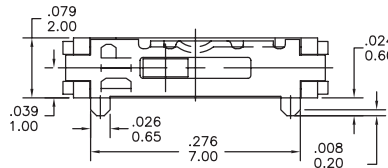
ELECTRICAL

Electrical Life: 10,000 operations min.
 Non-Switching Rating: 100mA, 50VDC.
 Switching Rating: 25mA, 24VDC.
 Contact resistance: 100mΩ max.
 Insulation Resistance: 100mΩ min. (500VDC)
 Dielectric Strength: 500VAC / 1minute.
 Capacitance: 50pF max.
 Circuit: 1P2T, 1P3T

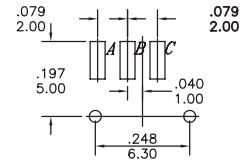
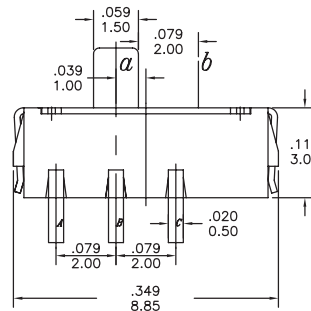
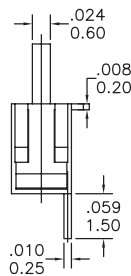
MODEL OPTIONS



SS3-CM



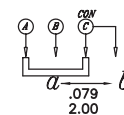
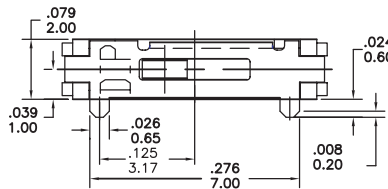
CITCUIT DIAGRAM



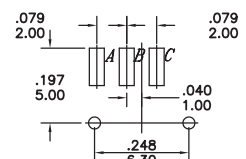
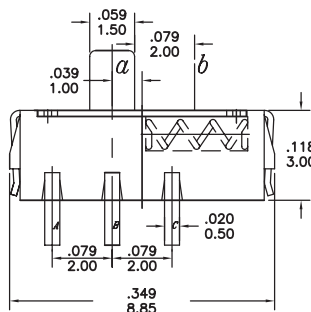
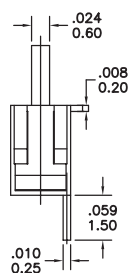
PCB MOUNTING



SS3-CMS

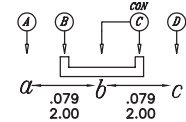
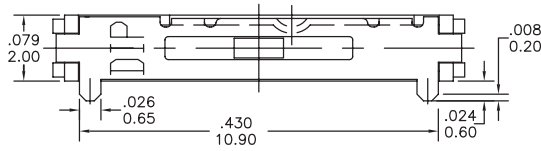


CITCUIT DIAGRAM



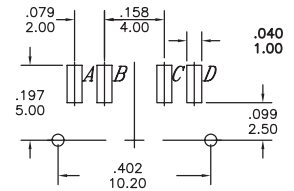
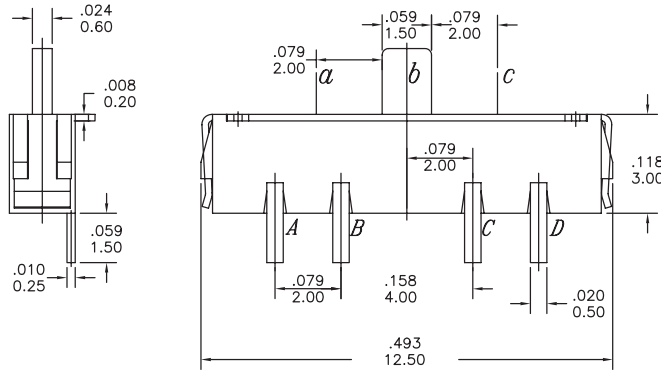
PCB MOUNTING

MODEL OPTIONS

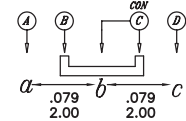
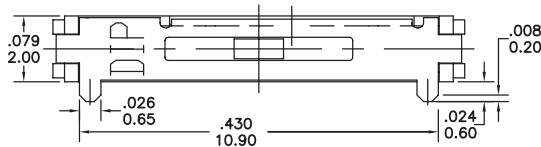
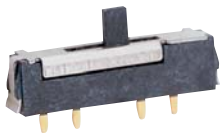


CITCUIT DIAGRAM

SS4-CM

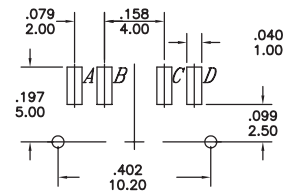
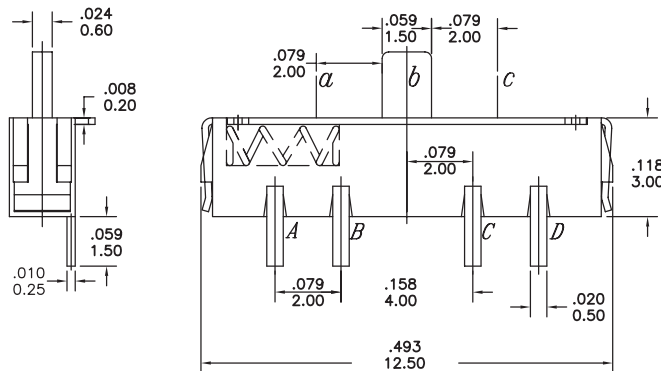


PCB MOUNTING



CITCUIT DIAGRAM

SS4-CMS



PCB MOUNTING