



General Specifications

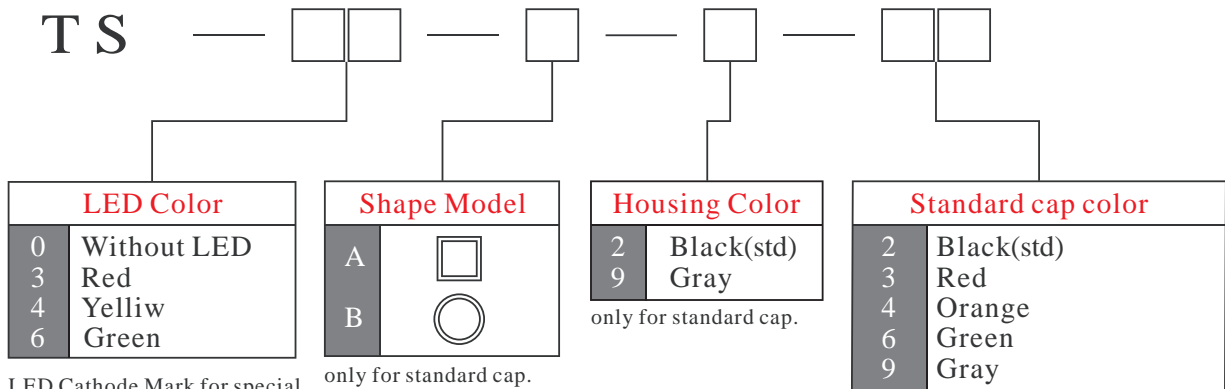
Circuit	:SPST
Current Rating	:50mA
Voltage Rating	:12VDC
Dielectric Withstanding Voltage	:250VAC for 1 minute
Contact Resistance	:100m Ohm Max.(initial)
Insulation Resistance	:100M Ohm Min.
Operating Force	:200gf+50gf
Total Travel	:0.25mm+0.2mm
Operating Life	:100,000 cycles Min.
Solder Specifications	:260 deg. for 3 seconds
Function	:Momentary
Operating Temperature	:-10 deg.~+60 deg.

Materials

Cap	:Acrylonitrile Butadine Styrene (ABS)
A4 type cap	:Polycarbonate (PC)
Housing	:Polyamide (PA)
Stem	:Polybutylene terephthalate (PBT)
Base	:Polyamide(PA)
Terminal	:Brass with silver plating
Action Dome	:SUS 301 with gold plating

HOW TO ORDER

TS



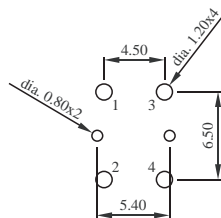
LED Cathode Mark for special order, not standard type.

only for standard cap.

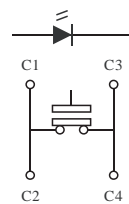
EXAMPLE : TS-3-A-2-3

Illuminated tact switch-Red led-"A" Housing -Black housing - Red cap

PCB Mounting Holes & Circuit Diagram



P.C.B. Mounting Holes



Circuit Diagram



DIMENSION

