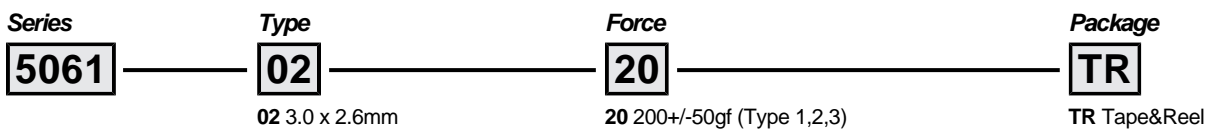
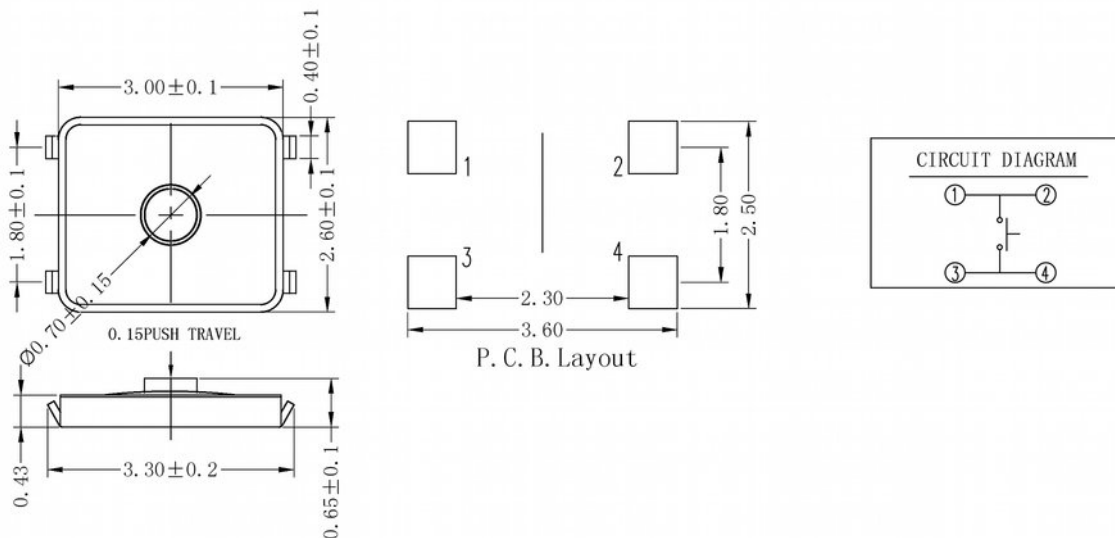
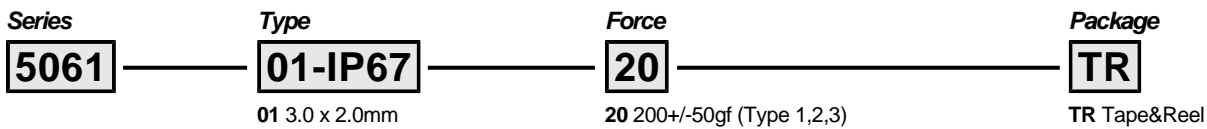
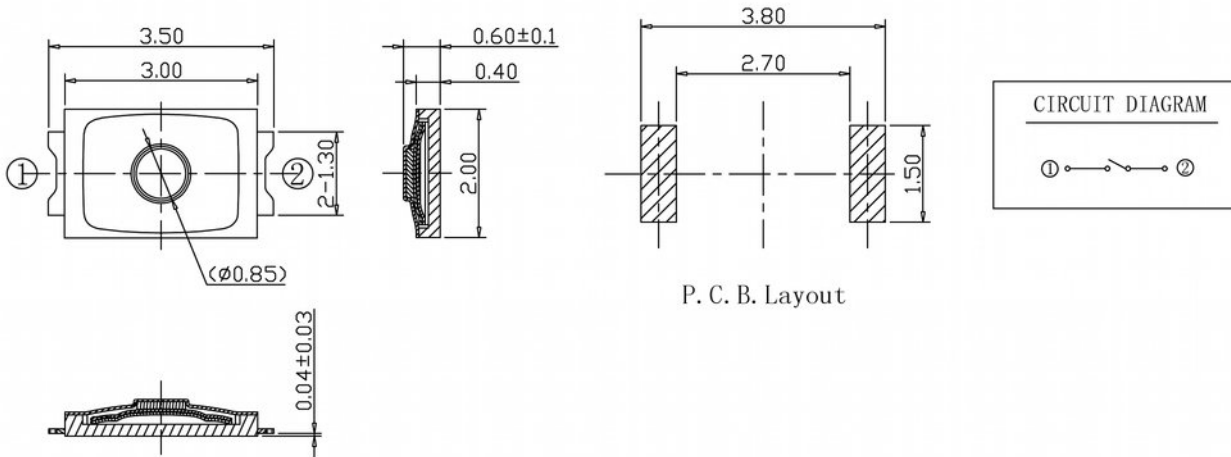
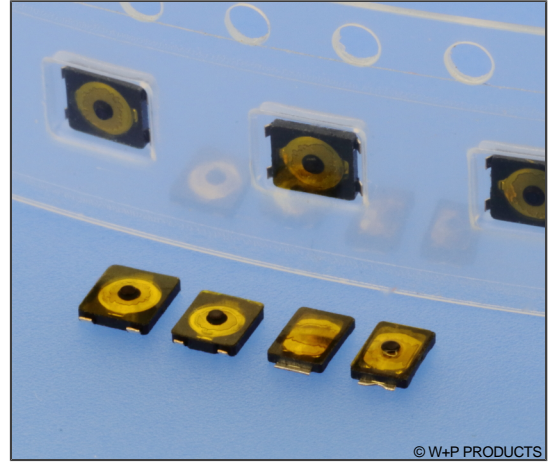


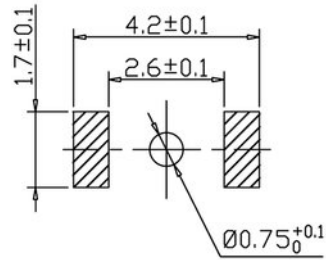
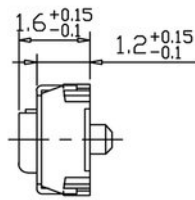
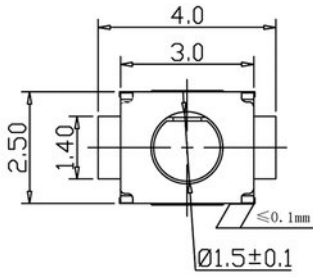
Technische Daten / Technical Data

Gehäuse	Thermoplast, nach UL94 V-0
Shell	Thermoplastic, rated UL94 V-0
Kontaktmaterial	Kupferlegierung
Contact Material	Copper alloy
Durchgangswiderstand	< 100 mΩ
Contact Resistance	< 100 mΩ
Isolationswiderstand	> 100 MΩ
Insulation Resistance	> 100 MΩ
Spannungsfestigkeit	250 V AC
Test Voltage	250 V AC
Nennspannung	12 V DC
Voltage Rating	12 V DC
Nennstrom	50 mA
Current Rating	50 mA
Temperaturbereich	-40 °C ... +85 °C
Temperature Range	-40 °C ... +85 °C
Mechanische Lebensdauer	min. 100 000 Schaltvorgänge
Mechanical Life	min. 100 000 operations
Verarbeitung	260 °C max. für 3s
Processing	260 °C max. for 3s

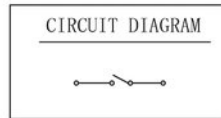
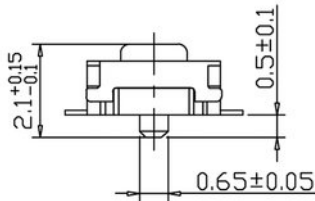


5061

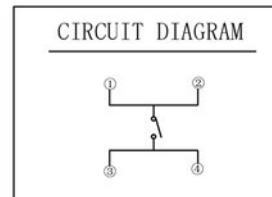
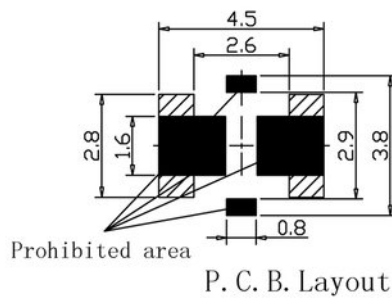
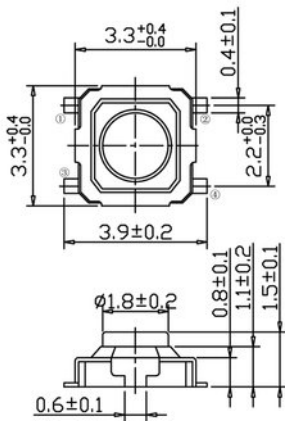
SMT-Taster 3,0 x 2,0 bis 5,2 x 5,2mm
SMT Tact Switches 3.0 x 2.0 to 5.2 x 5.2mm



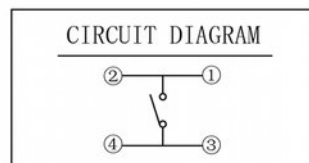
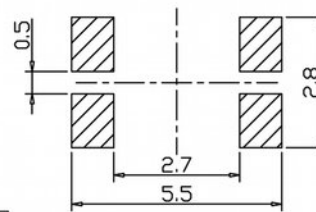
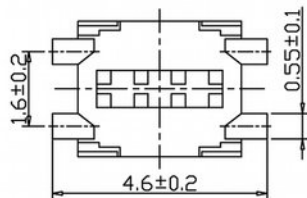
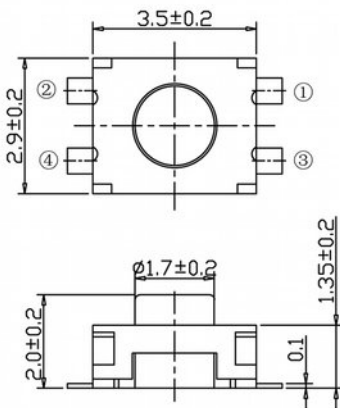
P. C. B. Layout



Series **5061** — **Type** **03** — **Force** **20** — **Package** **TR**
 03 3.0 x 2.5mm 20 200+/-50gf (Type 1,2,3) TR Tape&Reel

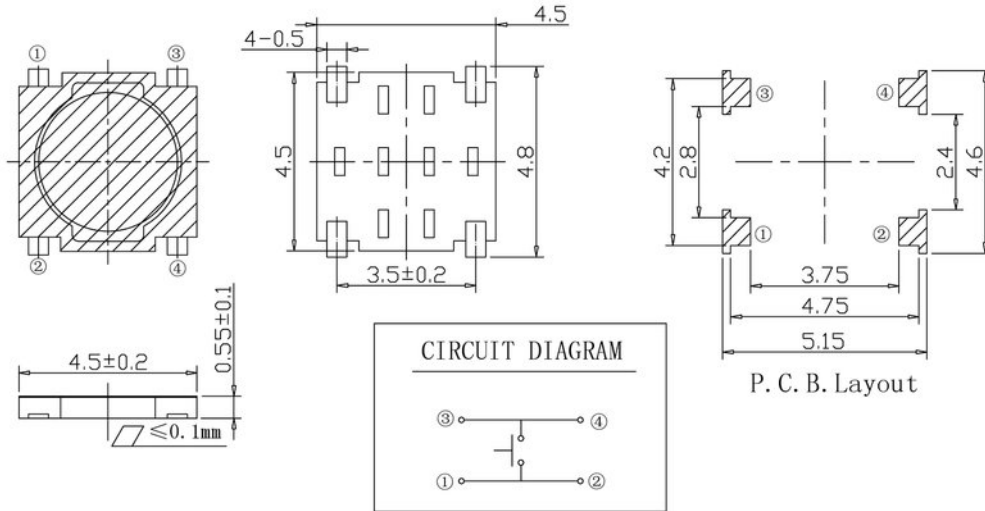


Series **5061** — **Type** **04** — **Force** **10** — **Package** **TR**
 04 3.3 x 3.3mm 10 160+/-30gf (Type 4,5,6) TR Tape&Reel

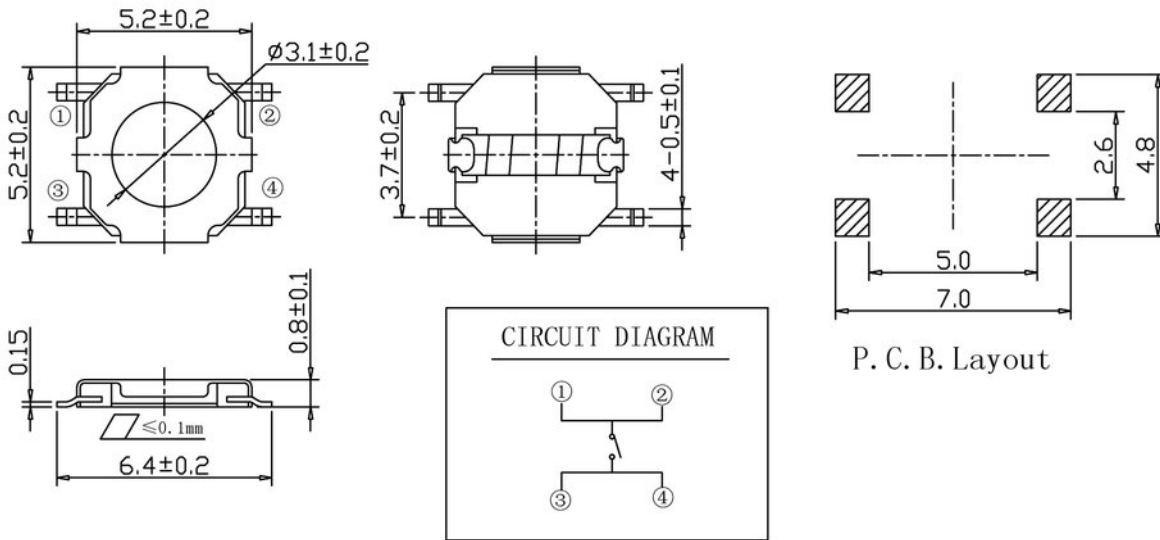


P. C. B. Layout

Series **5061** — **Type** **05** — **Force** **10** — **Package** **TR**
 05 3.5 x 2.9mm 10 160+/-30gf (Type 4,5,6) TR Tape&Reel



Series **5061** — **Type** **06** — **Force** **10** — **Package** **TR**
 06 4.5 x 4.5mm 10 160+/-30gf (Type 4,5,6) TR Tape&Reel



Series **5061** — **Type** **07** — **Force** **30** — **Package** **TR**
 07 5.2 x 5.2mm 30 250+/-50gf (Type 7) TR Tape&Reel