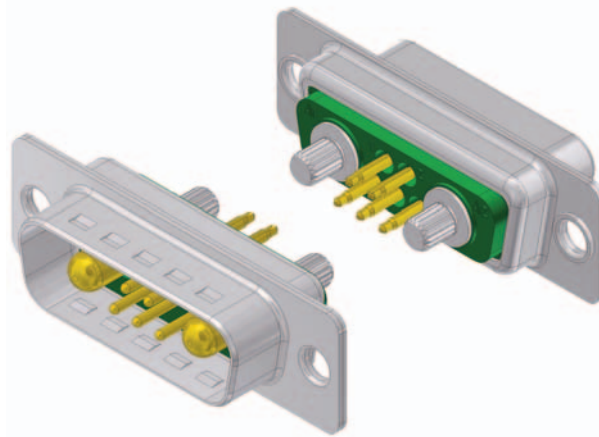


# D-Combi Einpresstechnik gerade

Gedrehte Kontakte / 20 Ampere

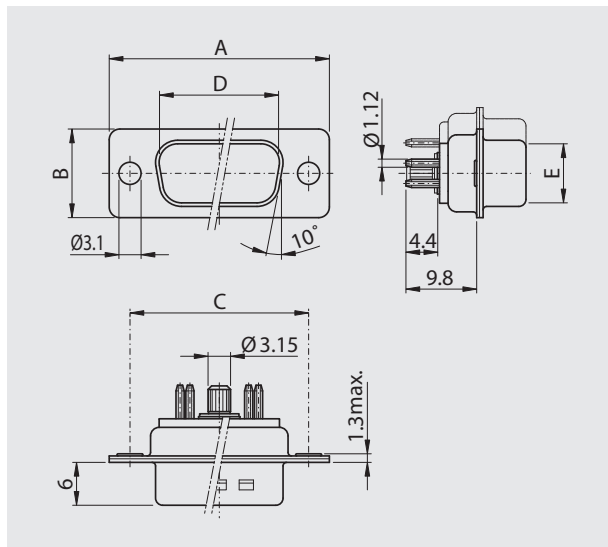
## D-Combi Press-Fit technology straight

Machined contacts / 20 AMP



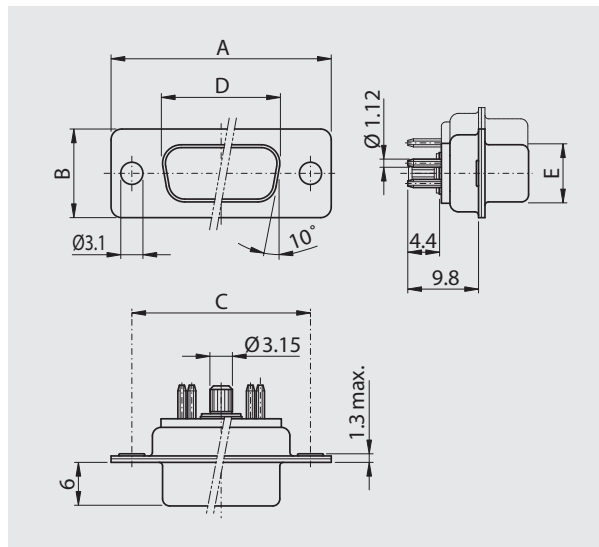
### Stiftleiste

Plug connector



### Buchsenleiste

Socket connector



### Gehäusegrösse

Shell size	A	B	C	D	E
DE	30.80	12.40	25.00	16.79	08.23
DA	39.20	12.40	33.30	25.12	08.23
DB	53.10	12.40	47.00	38.84	08.23
DC	69.50	12.40	63.50	55.30	08.23
DD	67.00	15.40	61.10	52.68	10.95

### Gehäusegrösse

Shell size	A	B	C	D	E
DE	30.80	12.40	25.00	16.46	08.02
DA	39.20	12.40	33.30	24.79	08.02
DB	53.10	12.40	47.00	38.50	08.02
DC	69.50	12.40	63.50	54.96	08.02
DD	67.00	15.40	61.10	52.55	10.87

## Bestellbezeichnung Order information

Polzahl	Sonderkontakte	Gehäuse chromatiert, Stift	Gehäuse chromatiert, Buchse
No. of pos.	Special contacts	Chromated shell, plug	Chromated shell, socket
05	1	DT 5W1 P PFF/PFR x	DT 5W1 S PFF/PFR x
02	2	DT 2W2 PS PFR x	DT 2W2 SP PFR x
03	3	DT 3W3 P PFR x	DT 3W3 S PFR x
03	3	DT 3W3 PSP PFR x	DT 3W3 SPS PFR x
07	2	DT 7W2 P PFF/PFR x	DT 7W2 S PFF/PFR x
11	1	DT 11W1 P PFF/PFR x	DT 11W1 S PFF/PFR x
05	5	DT 5W5 P PFR x	DT 5W5 S PFR x
09	4	DT 9W4 P PFF/PFR x	DT 9W4 S PFF/PFR x
13	3	DT 13W3 P PFF/PFR x	DT 13W3 S PFF/PFR x
17	2	DT 17W2 P PFF/PFR x	DT 17W2 S PFF/PFR x
21	1	DT 21W1 P PFF/PFR x	DT 21W1 S PFF/PFR x
08	8	DT 8W8 P PFR x	DT 8W8 S PFR x
13	6	DT 13W6 P PFF/PFR x	DT 13W6 S PFF/PFR x
17	5	DT 17W5 P PFF/PFR x	DT 17W5 S PFF/PFR x
21	4	DT 21WA4 P PFF/PFR x	DT 21WA4 S PFF/PFR x
25	3	DT 25W3 P PFF/PFR x	DT 25W3 S PFF/PFR x
27	2	DT 27W2 P PFF/PFR x	DT 27W2 S PFF/PFR x
24	7	DT 24W7 P PFF/PFR x	DT 24W7 S PFF/PFR x
36	4	DT 36W4 P PFF/PFR x	DT 36W4 S PFF/PFR x
43	2	DT 43W2 P PFF/PFR x	DT 43W2 S PFF/PFR x

Polzahl	Sonderkontakte	Gehäuse verzinkt, Stift	Gehäuse verzinkt, Buchse
No. of pos.	Special contacts	Tinned shell, plug	Tinned shell, socket
05	1	DTS 5W1 P PFF/PFR x	DTS 5W1 S PFF/PFR x
02	2	DTS 2W2 PS PFR x	DTS 2W2 SP PFR x
03	3	DTS 3W3 P PFR x	DTS 3W3 S PFR x
03	3	DTS 3W3 PSP PFR x	DTS 3W3 SPS PFR x
07	2	DTS 7W2 P PFF/PFR x	DTS 7W2 S PFF/PFR x
11	1	DTS 11W1 P PFF/PFR x	DTS 11W1 S PFF/PFR x
05	5	DTS 5W5 P PFR x	DTS 5W5 S PFR x
09	4	DTS 9W4 P PFF/PFR x	DTS 9W4 S PFF/PFR x
13	3	DTS 13W3 P PFF/PFR x	DTS 13W3 S PFF/PFR x
17	2	DTS 17W2 P PFF/PFR x	DTS 17W2 S PFF/PFR x
21	1	DTS 21W1 P PFF/PFR x	DTS 21W1 S PFF/PFR x
08	8	DTS 8W8 P PFR x	DTS 8W8 S PFR x
13	6	DTS 13W6 P PFF/PFR x	DTS 13W6 S PFF/PFR x
17	5	DTS 17W5 P PFF/PFR x	DTS 17W5 S PFF/PFR x
21	4	DTS 21WA4 P PFF/PFR x	DTS 21WA4 S PFF/PFR x
25	3	DTS 25W3 P PFF/PFR x	DTS 25W3 S PFF/PFR x
27	2	DTS 27W2 P PFF/PFR x	DTS 27W2 S PFF/PFR x
24	7	DTS 24W7 P PFF/PFR x	DTS 24W7 S PFF/PFR x
36	4	DTS 36W4 P PFF/PFR x	DTS 36W4 S PFF/PFR x
43	2	DTS 43W2 P PFF/PFR x	DTS 43W2 S PFF/PFR x

Anstelle des x am Ende der Artikelbezeichnung die gewünschte Güteklasse 1 oder 2 einfügen.  
Andere Vergoldungen auf Anfrage.

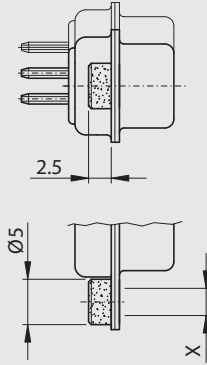
To request class 1 or 2 quality, replace the x at the end of the part no.  
Other gold platings on request.

# Montagearten Assemblies

Kundenspezifische Ausführungen  
auf Anfrage  
Customer specified products  
on request

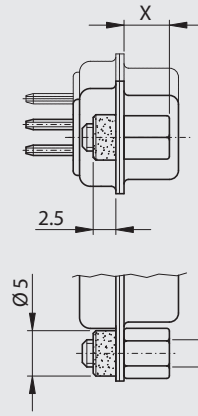


## M85 x



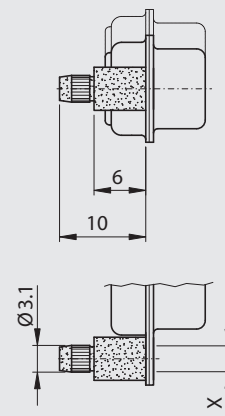
M85 UN	Niete / back nut	UNC4-40
M85 M3	Niete / back nut	M3

## M85 xx



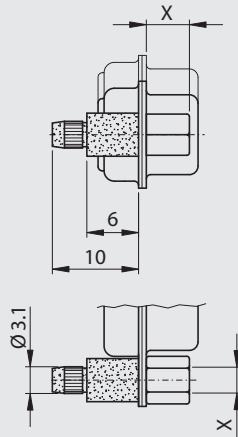
M85 UN B5	Niete / back nut	UNC4-40
	Schraube / screw	5 mm
M85 UN B6	Niete / back nut	UNC4-40
	Schraube / screw	6 mm
M85 M3 B5	Niete / back nut	M3
	Schraube / screw	5 mm
M85 M3 B6	Niete / back nut	M3
	Schraube / screw	6 mm

## M96 x



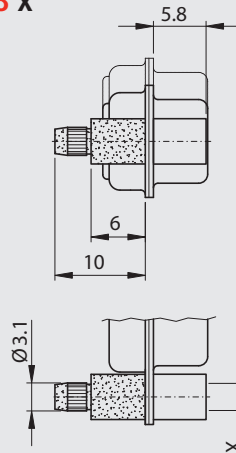
M96 UN	Push-On	UNC4-40
M96 M3	Push-On	M3

## M96 xx



M96 UN B5	Push-On	UNC4-40
	Schraube / screw	5 mm
M96 UN B6	Push-On	UNC4-40
	Schraube / screw	6 mm
M96 M3 B5	Push-On	M3
	Schraube / screw	5 mm
M96 M3 B6	Push-On	M3
	Schraube / screw	6 mm

## M98 x



M98 UN	Push-On	UNC4-40
	Niete / front nut	
M98 M3	Push-On	M3
	Niete / front nut	

# Leiterplattenlochbilder

Für gerade Einpresskontakte

## PCB hole pattern

For straight Press-Fit contacts

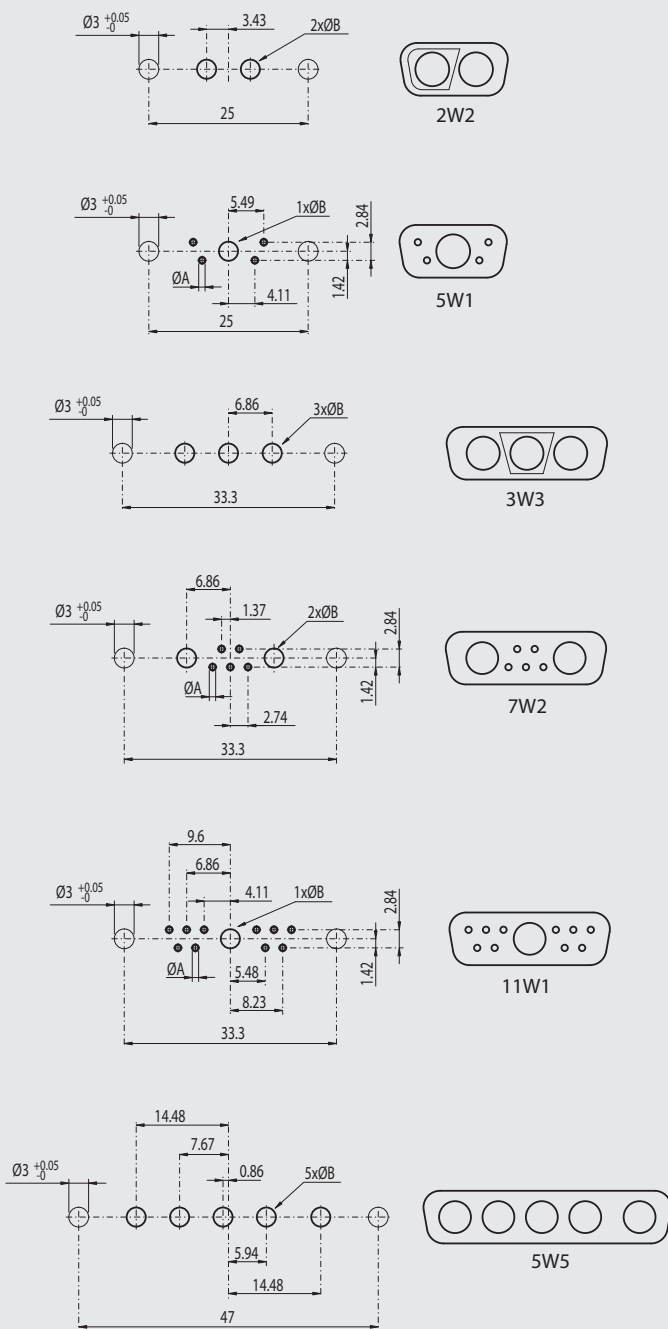
### PFF

Die Lochbilder gelten für Stiftleisten.

Bei Verwendung von Buchsenleisten muss das Lochbild gespiegelt werden.

All PCB hole patterns apply to plug connectors.

The hole pattern must be mirrored when using socket connectors.

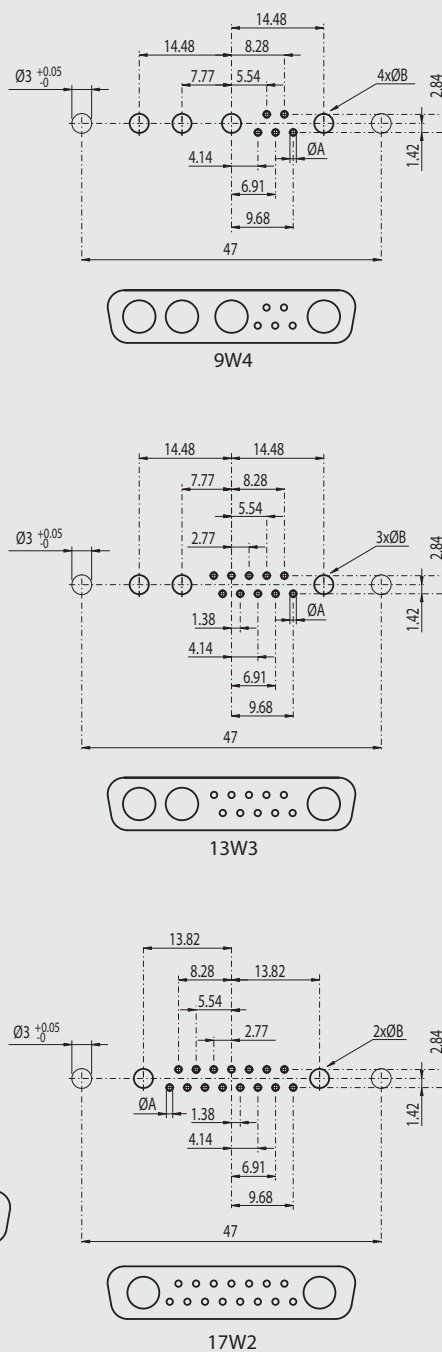


### A Deltron empfiehlt / Deltron recommends

- verzinnt tin plated  $\varnothing 1^{+0.09}_{-0.02}$  mm
- vergoldet gold plated  $\varnothing 1^{+0.09}_{+0.03}$  mm
- DIN-Mass DIN-Measurement  $\varnothing 1^{+0.09}_{-0.06}$  mm

### B Deltron empfiehlt / Deltron recommends

- $\varnothing 3^{+0.08}_{+0.03}$  mm



### PFF

Die Lochbilder gelten für Stiftleisten.

Bei Verwendung von Buchsenleisten muss das Lochbild gespiegelt werden.

All PCB hole patterns apply to plug connectors.

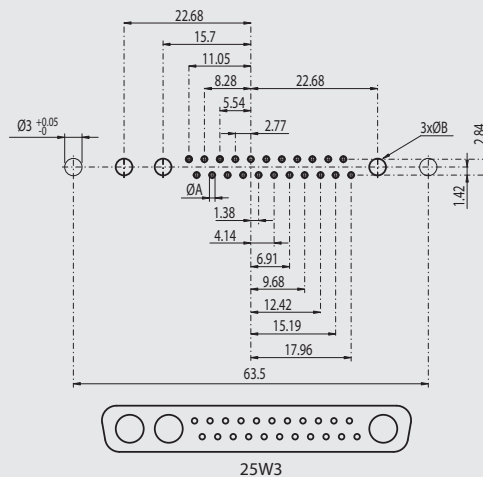
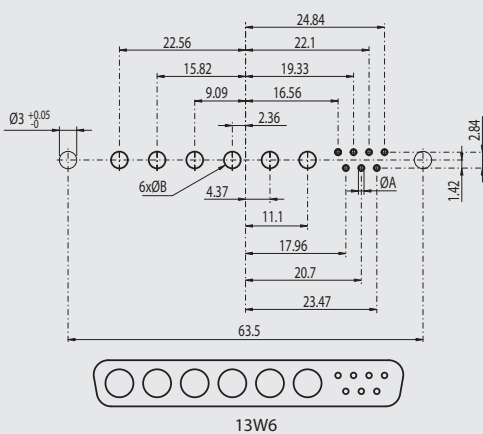
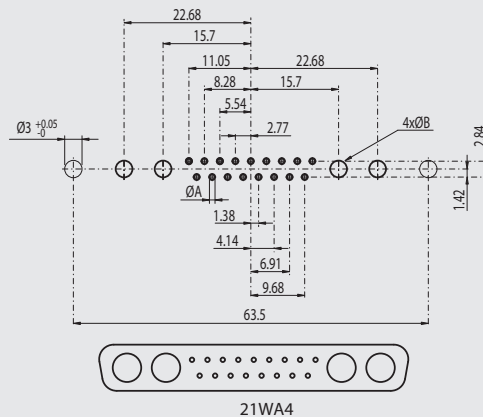
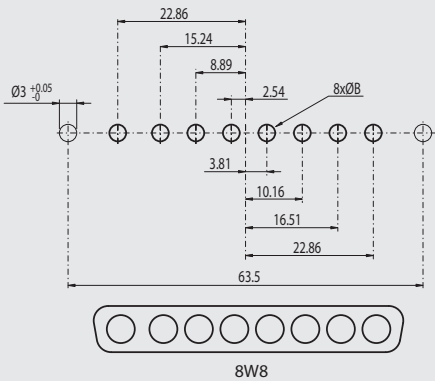
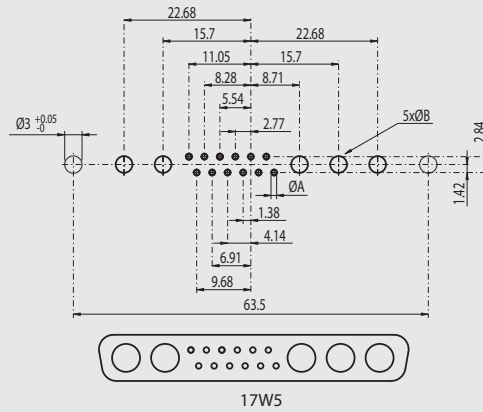
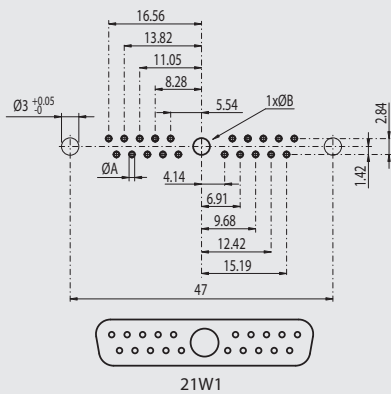
The hole pattern must be mirrored when using socket connectors.

### A Deltron empfiehlt / Deltron recommends

- verzinnt tin plated  $\varnothing 1 + 0.09 \text{ mm}$   
- 0.02 mm
- vergoldet gold plated  $\varnothing 1 + 0.09 \text{ mm}$   
+ 0.03 mm
- DIN-Mass DIN-Measurement  $\varnothing 1 + 0.09 \text{ mm}$   
- 0.06 mm

### B Deltron empfiehlt / Deltron recommends

- $\varnothing 3 + 0.08 \text{ mm}$   
+ 0.03 mm



# Leiterplattenlochbilder

Für gerade Einpresskontakte

## PCB hole pattern

For straight Press-Fit contacts

### PFF

Die Lochbilder gelten für Stiftleisten.

Bei Verwendung von Buchsenleisten muss das Lochbild gespiegelt werden.

All PCB hole patterns apply to plug connectors.

The hole pattern must be mirrored when using socket connectors.

### A Deltron empfiehlt / Deltron recommends

- verzinnt tin plated  $\varnothing 1 + 0.09 \text{ mm}$   
- 0.02 mm
- vergoldet gold plated  $\varnothing 1 + 0.09 \text{ mm}$   
+ 0.03 mm
- DIN-Mass DIN-Measurement  $\varnothing 1 + 0.09 \text{ mm}$   
- 0.06 mm

### B Deltron empfiehlt / Deltron recommends

- $\varnothing 3 + 0.08 \text{ mm}$   
+ 0.03 mm

