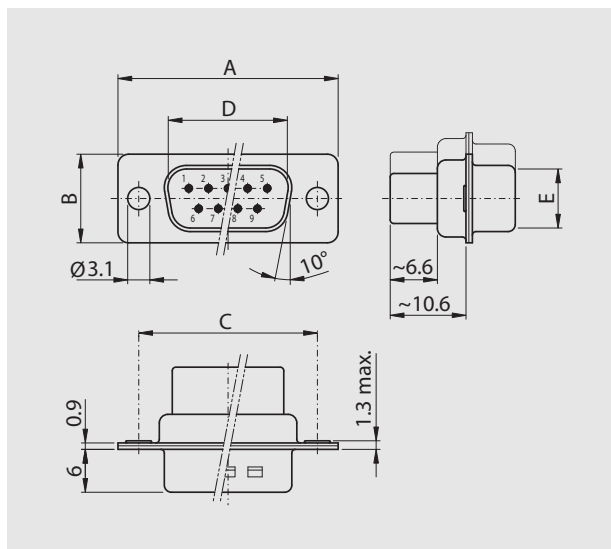


Gehäuse für Crimpkontakte Housing for crimp contacts



Stiftleiste

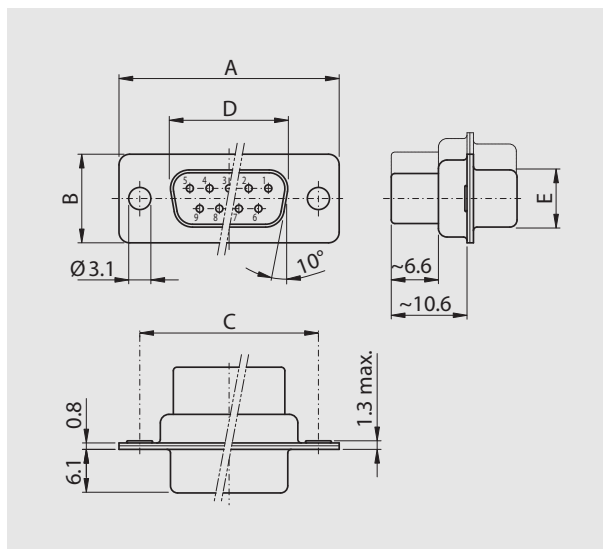
Plug connector



Polzahl	A	B	C	D	E
No. of pos.					
09	30.80	12.40	25.00	16.79	08.23
15	39.20	12.40	33.30	25.12	08.23
25	53.10	12.40	47.04	38.84	08.23
37	69.50	12.40	63.50	55.30	08.23
50	67.00	15.40	61.10	52.68	10.95

Buchsenleiste

Socket connector



Polzahl	A	B	C	D	E
No. of pos.					
09	30.80	12.40	25.00	16.46	08.02
15	39.20	12.40	33.30	24.79	08.02
25	53.10	12.40	47.04	38.50	08.02
37	69.50	12.40	63.50	54.96	08.02
50	67.00	15.40	61.10	52.55	10.87

Bestellbezeichnung

Polzahl	Gehäuse chromatiert	Gehäuse verzinkt
No. of pos.	Chromated shell	Tinned shell
09	DT 09 PX	DTS 09 PX
15	DT 15 PX	DTS 15 PX
25	DT 25 PX	DTS 25 PX
37	DT 37 PX	DTS 37 PX
50	DT 50 PX	DTS 50 PX

Order information

Polzahl	Gehäuse chromatiert	Gehäuse verzinkt
No. of pos.	Chromated shell	Tinned shell
09	DT 09 SX	DTS 09 SX
15	DT 15 SX	DTS 15 SX
25	DT 25 SX	DTS 25 SX
37	DT 37 SX	DTS 37 SX
50	DT 50 SX	DTS 50 SX

Crimpkontakte

Geeignet für Kabel AWG 16-20, 20-24 und 24-28

Crimp contacts

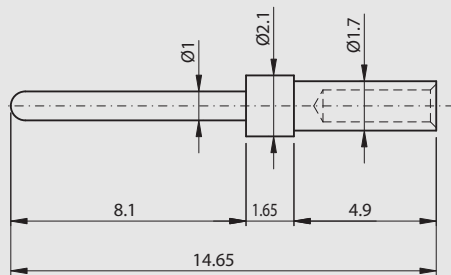
Suitable for cable AWG 16-20, 20-24 and 24-28



Stift

Plug

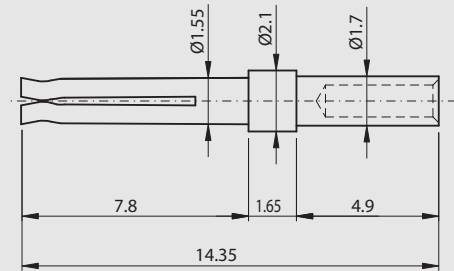
PX Gedrehte Kontakte / Machined contacts



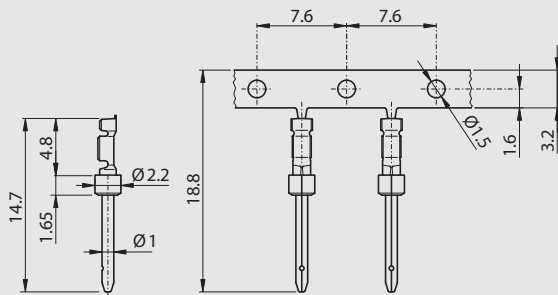
Buchse

Socket

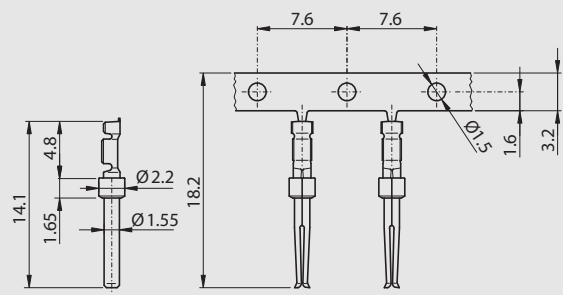
SX Gedrehte Kontakte / Machined contacts



P-XA Gestanzte Kontakte / Stamped contacts



S-XA Gestanzte Kontakte / Stamp contacts



Bestellbezeichnung

AWG 20-24	0.56–0.23 mm ²	PX1 x
AWG 24-28	0.23–0.089 mm ²	PX2 x
AWG 16-20	1.44–0.56 mm ²	PX3 x
AWG 20-24	0.56–0.23 mm ²	P-XA 1B x LR-y
AWG 24-28	0.23–0.089 mm ²	P-XA 2B x LR-y

y = L: Abwicklungsrichtung links, 10'000 Kontakte
y = R: Abwicklungsrichtung rechts, 10'000 Kontakte

Anstelle des x am Ende der Artikelbezeichnung die gewünschte Güteklasse 1 oder 2 einfügen.
Andere Vergoldungen auf Anfrage.

Order information

AWG 20-24	0.56–0.23 mm ²	SX1 x
AWG 24-28	0.23–0.089 mm ²	SX2 x
AWG 16-20	1.44–0.56 mm ²	SX3 x
AWG 20-24	0.56–0.23 mm ²	S-XA 1B x LR-y
AWG 24-28	0.23–0.089 mm ²	S-XA 2B x LR-y

y = L: Direction of winding-up, left; 10'000 contacts
y = R: Direction of winding-up, right; 10'000 contacts

To request class 1 or 2 quality, replace the x at the end of the part no.
Other gold platings on request.