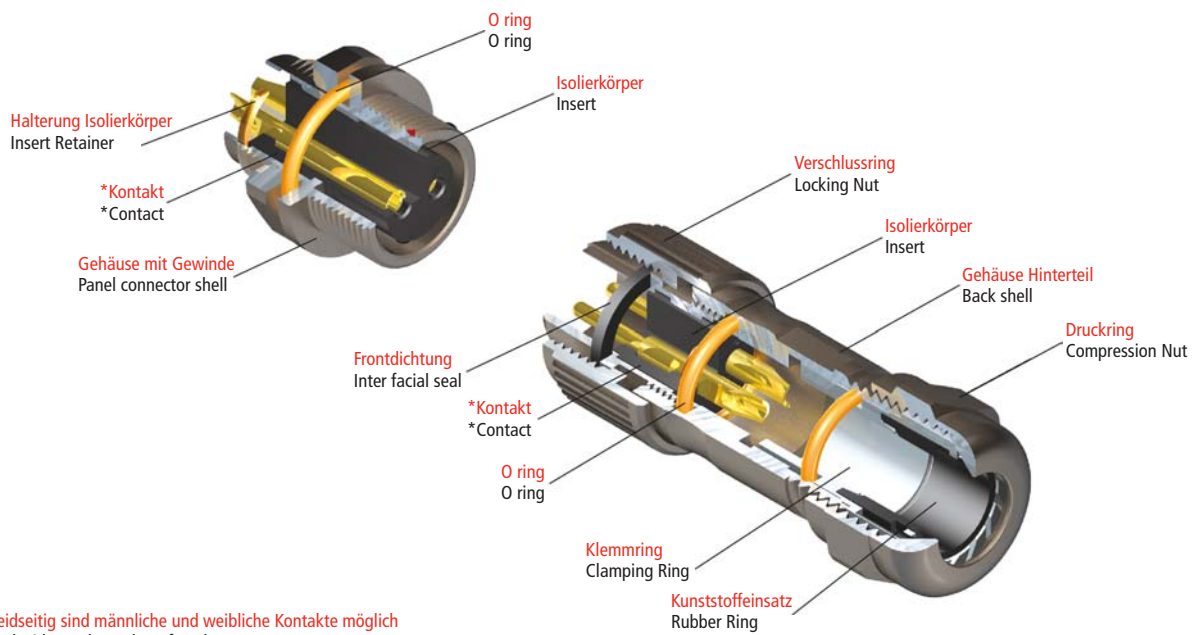




Schraubverriegelung / Threaded coupling

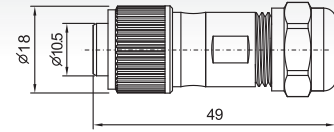
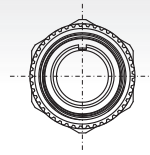


*beidseitig sind männliche und weibliche Kontakte möglich
 *Each side can be male or female contact

Technische Daten und Materialien / Material an spec

Verriegelung / Coupling	Schraubkupplung / Threaded coupling
Gehäuse / Shell material	Zinklegierung über Nickel / Zinc alloy with black nickel plating
Isolierkörper / Insert material	PPS max. Temperatur 260 °C / PPS max. temperature 260 °C
Kontakte / Contact material	Messing goldbeschichtet / Brass with gold plating
Anschlussart / Termination	Lötanschluss / Solder
Kabel Aussendurchmesser Bereich / Cable outer diameter range	5 – 8 mm
IP Schutzklasse / IP rating	IP 67
Steckzyklen / Mating cycle	> 500
Betriebstemperatur / Temperature range	-25 ~ +85 °C
Isolationswiderstand MΩ / Insulation resistance MΩ	2000

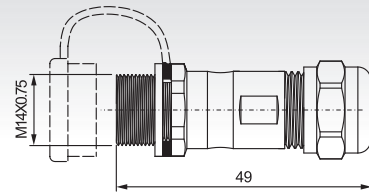
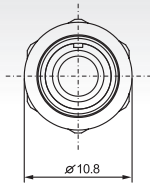
Kabel Steckverbinder | kompatibel mit DELMST 1211, DELMST 1212, DELMST 1213
Cable connector | Mate with DELMST 1211, DELMST 1212, DELMST 1213



DELMST 1210/P ___ **DELMST 1210/S** ___

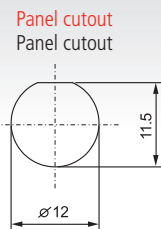
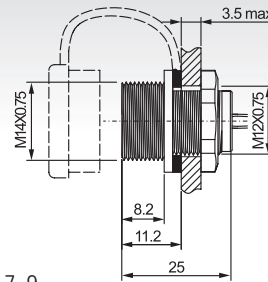
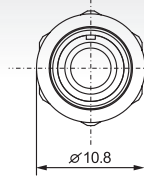
Anzahl Kontakte / Number of contacts: 2, 3, 4, 5, 6, 7, 9

Kabel Dosen | kompatibel mit DELMST 1210 In-line cable connector | Mate with DELMST 1210



DELMST 1211/P ___ **DELMST 1211/S** ___

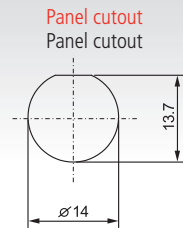
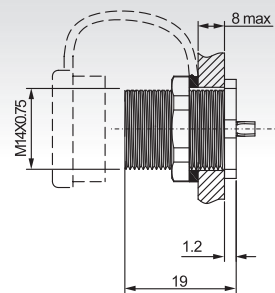
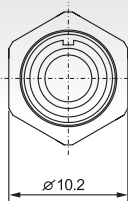
Rückwand Gehäusemontage | kompatibel mit DELMST 1210 Rear mount | Mate with DELMST 1210



DELMST 1212/P ___ **DELMST 1212/S** ___

Anzahl Kontakte /
Number of contact: 2, 3, 4, 5, 6, 7, 9

Frontwand Gehäusemontage | kompatibel mit DELMST 1210 Front mount | Mate with DELMST 1210



DELMST 1213/P ___ **DELMST 1213/S** ___

Anordnung der Kontakte und technische Daten / Contact arrangement and spec

Anzahl Kontakte / No of contact	2	3	4	5	6	7	9
männliche Kontakte Frontansicht Male contact face view							
Strombelastbarkeit (A) Rated current (A)	13A	13A	5A	5A	5A	5A	3A
Kontaktdurchmesser Contact diameter	∅ 6 x 2	∅ 6 x 3	∅ 1 x 4	∅ 1 x 5	∅ 1 x 6	∅ 1 x 7	∅ 0.7 x 9
Betriebsspannung (AC V) Rated voltage (AC V)	250 V	250 V	200 V	180 V	125 V	125 V	125 V
Prüfspannung (AC V) 1 min. Test voltage (AC V) 1 min.	1500 V	1500 V	1500 V	1000 V	1000 V	1000 V	1000 V
Durchgangswiderstand mΩ Contact resistance mΩ	2	2	5	5	5	5	10
Litzengröße mm ² / AWG Wire size mm ² / AWG	≤ 2/14	≤ 2/14	≤ 0.785/18	≤ 0.785/18	≤ 0.785/18	≤ 0.785/18	≤ 0.785/18