

TECHNICAL CHARACTERISTICS

1.General Characteristics

Dimensions: 29.60L x 17.20W x 3.00H mm
 Weight: Approx. 1.4g
 Contact principle: Friction technology
 Operating position: Shaft up / Down / Horizontal
 Mounting System: SMT Type with post
 Durability: 10,000 cycles min.

2. Mechanical Characteristics:

Insulation material: Thermoplastic, UL 94V-0

3.Electrical Characteristics

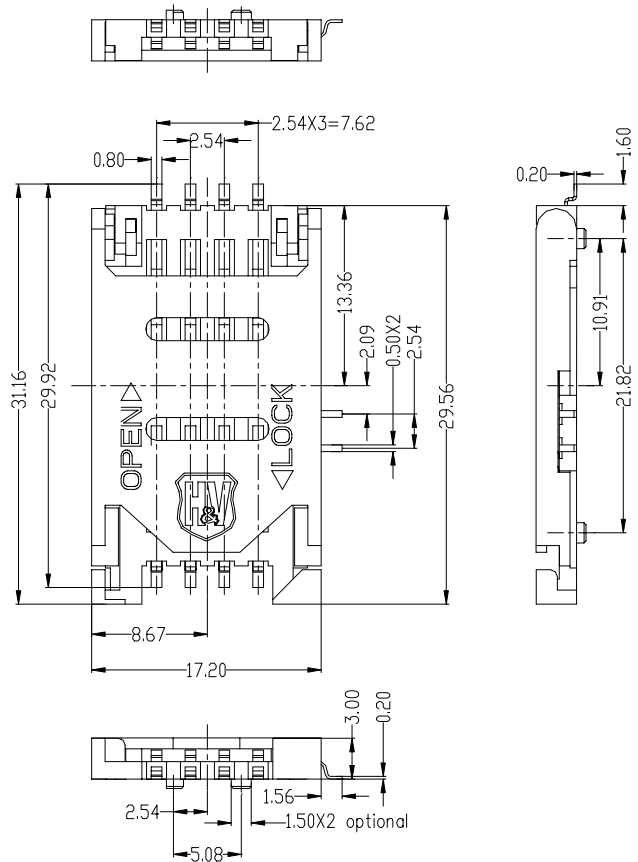
Number of contacts (Optional): 6,8 pins
 Contact resistance: 50 mΩ typical, 100 mΩ max.
 Insulation resistance: > 1000 MΩ / 500 VDC
 Switch Type: Blade
 Operation: Closed on lock position

4. Solderability

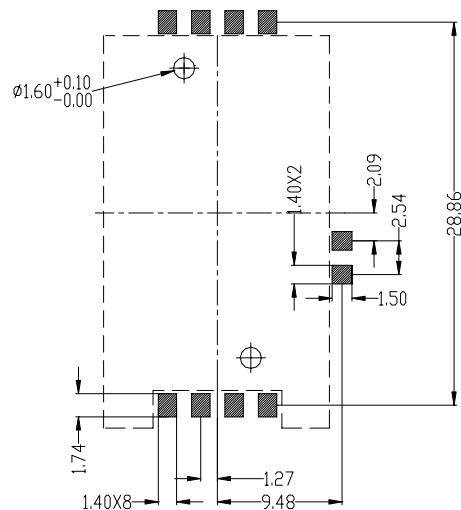
Wave: Not applicable
 Vaporphase: 215°C, 30 sec. Max.
 IR reflow: 230°C, 15 sec. Max.
 Manual soldering: 360°C, 3 sec. Max.

5. Environmental Characteristics

Operating temperature: - 40°C, ~ + 85°C,
 Operating humidity: 10 % - 95 % RH
 Storage temperature: - 40°C, ~ + 85°C,
 Storage humidity: 10 % - 95 % RH
 Thermal shock: - 40°C, ~ + 85°C, 5 cycles
 Damp Heat: 40°C, 90 % RH, 500HR.
 Salt-mist: 35°C, 5%, NaCl , 48HR.



Unit: mm; Tolerances: ±0.10mm
 Mechanical outline dimension



Unit: mm; Tolerances: ±0.10mm
 Reference dimension for PCB layout

H&V SIM Card Acceptor

Model No.: ICA-560 Post type A

Revision: 0.90

Date: NOV. 12, 2003