

EMV Compliant

TECHNICAL CHARACTERISTICS

1.General Characteristics

Dimensions: 62.60L x 30.00W x 6.80H mm  
Weight: Approx. 6.7g  
Contact principle: Friction technology  
Operating position: Shaft up / Down / Horizontal  
Mounting System: Thru-Hole with Snap-in-lock  
Durability: 200,000 cycles min.

2. Mechanical Characteristics:

Insulation material: Thermoplastic, UL 94V-0

3.Electrical Characteristics

Number of contacts: 8 pins  
Contact resistance: 50 mΩ typical, 100 mΩ max.  
Insulation resistance: > 1000 MΩ / 500 VDC  
Switch type: Blade  
Operation: Normally Open

4. Solderability

Wave: 260°C, 5 sec.  
Vapor phase: Not applicable  
IR reflow: Not applicable  
Manual soldering: 360°C, 3 sec. Max.

5. Environmental Characteristics

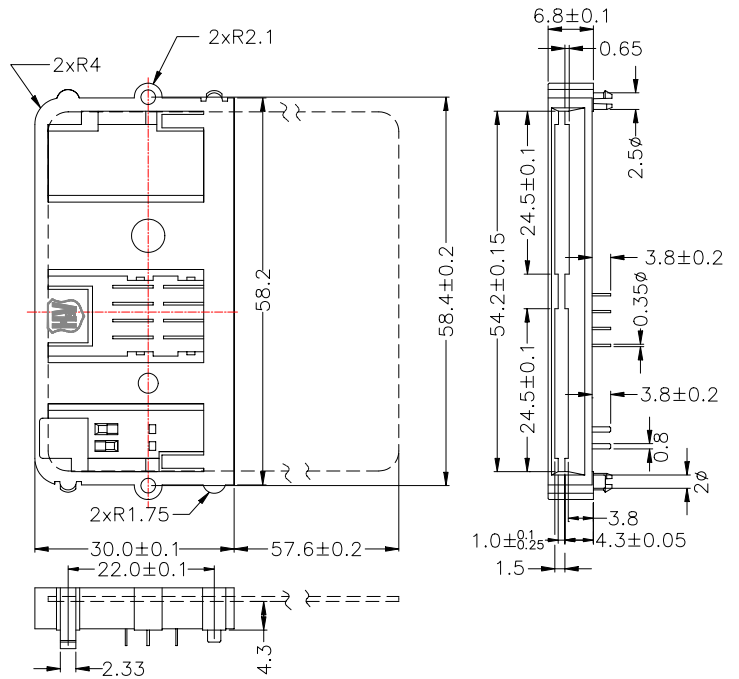
Operating temperature: - 40°C ~ + 85°C  
Operating humidity: 10 % ~ 95 % RH  
Storage temperature: - 40°C ~ + 85°C  
Storage humidity: 10 % ~ 95 % RH  
Thermal shock: - 40°C ~ + 85°C, 5 cycles  
Damp Heat: 40°C, 90 % RH, 500HR.  
Salt-mist: 35°C, 5%, NaCl , 48HR.

H&V Smart Card Acceptor

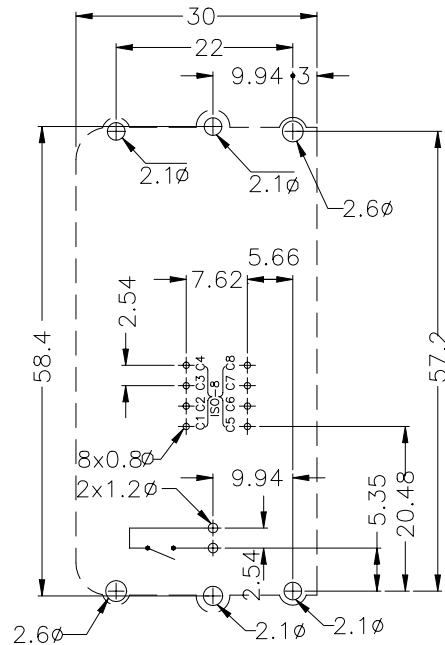
Model No.: ICA-605

Revision: 1.4

Date: DEC. 01, 2003



Unit: mm; Tolerances: ±0.10mm  
Mechanical outline dimension



Unit: mm; Tolerances: ±0.10mm  
Reference dimension for PCB layout