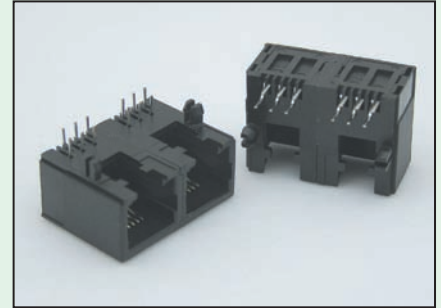
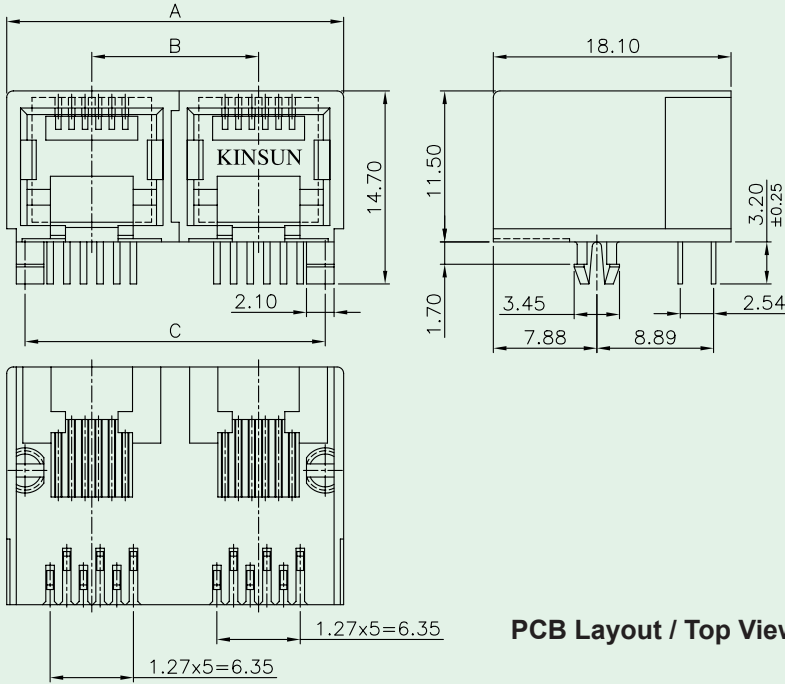


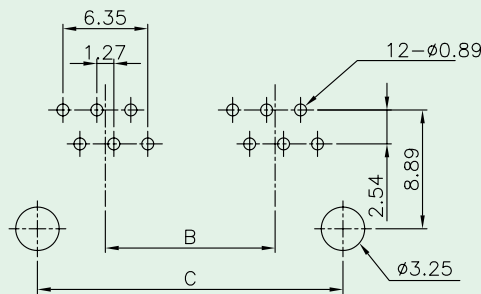


# Side Entry PCB Jack ( Multi-Port, RJ11, Unshielded )

**KINSUN**



No. of Ports	Dimensions		
	A	B	C
2	25.66	12.70	22.86
3	38.36	25.40	35.56
4	51.06	38.10	48.26
5	63.76	50.80	60.96
6	76.46	63.50	73.66
7	89.16	76.20	86.36
8	101.86	88.90	99.06



## Materials

- **Housing** : Engineering Thermoplastic.  
Flammability Rating UL 94V-0.
- **Contacts** : Phosphor Bronze.
- **Plating** : Gold Plating Over Nickel In Contact Area.  
Tin Plating Over Nickel In Solder Area.

## Ordering Information

