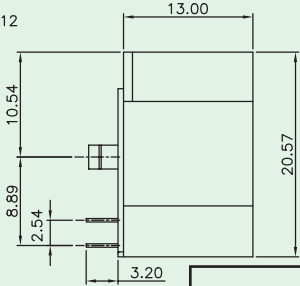
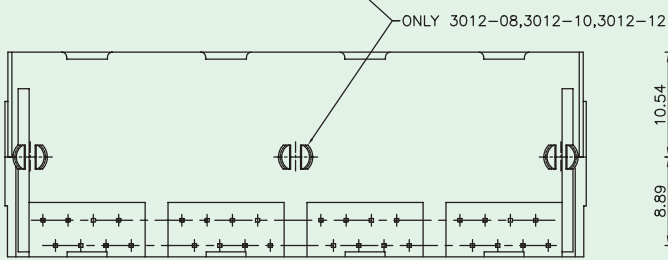
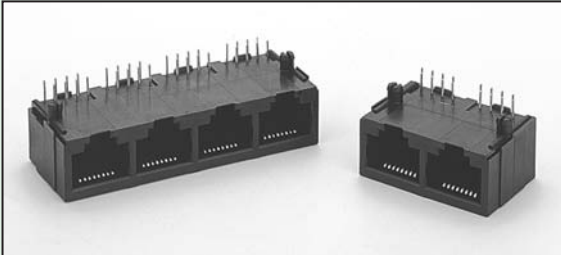
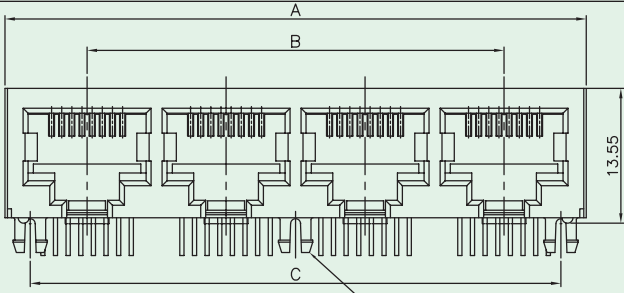
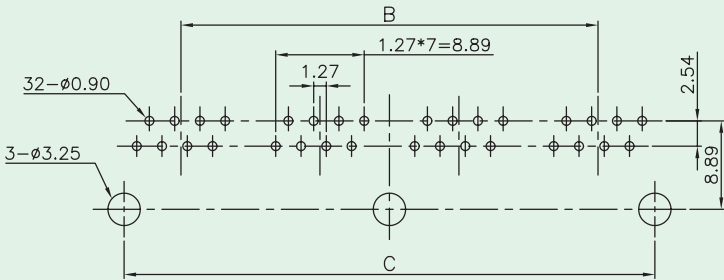




Side Entry PCB Jack (Multi-Port, RJ45, UTP)



PCB LAYOUT/TOP VIEW



Part No.	No. of Ports	A	B	C
3012-02	2	30.48	13.97	25.40
3012-03	3	44.45	27.94	39.37
3012-04	4	58.42	41.91	53.34
3012-05	5	72.39	55.88	67.31
3012-06	6	86.38	69.85	81.28
3012-08	8	114.30	97.79	109.22
3012-10	10	142.24	125.73	137.16
3012-12	12	170.18	153.67	165.10

Materials

- **Housing** : Engineering Thermoplastic.
Flammability Rating UL 94V-0.
- **Contacts** : Phosphor Bronze.
- **Plating** : Gold Plating Over Nickel In Contact.
Tin Plating Over Nickel In Solder Area.

Ordering Information

