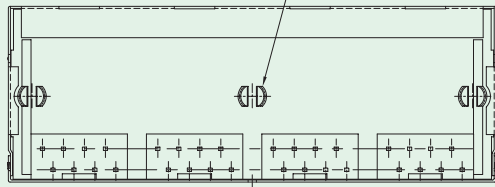
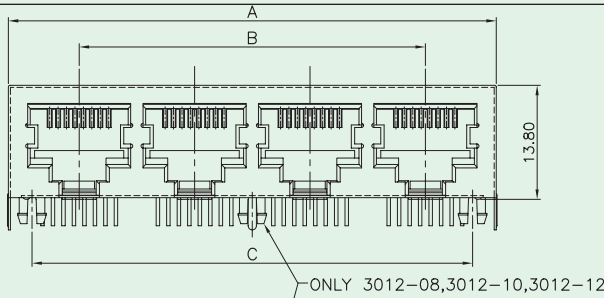


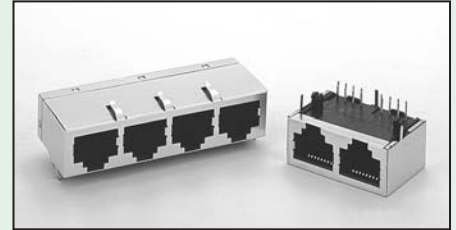
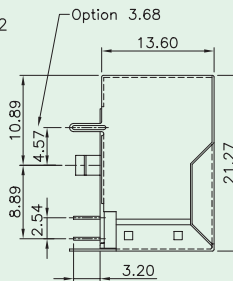
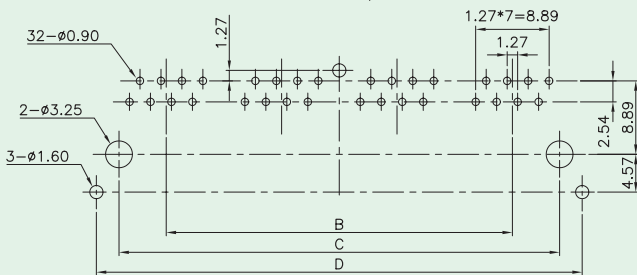


Side Entry PCB Jack (Multi-Port, RJ45, STP)

KINSUN



PCB LAYOUT/TOP VIEW

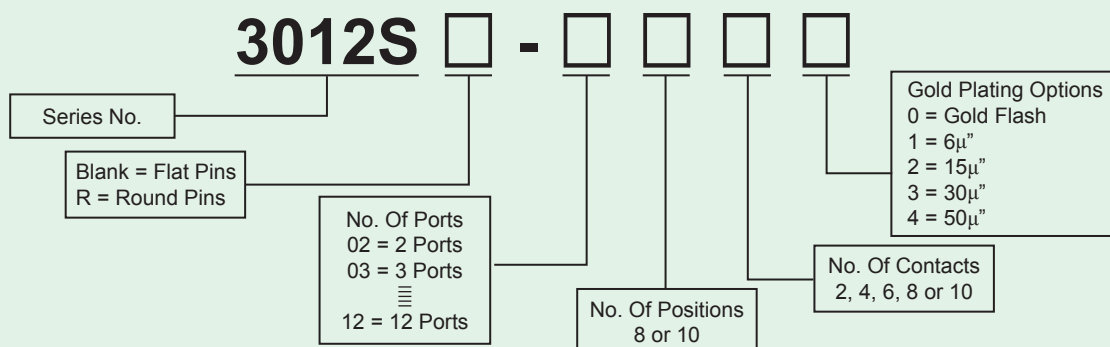


Part No.	No. of Ports	A	B	C	D
3012-02	2	31.12	13.97	25.40	30.87
3012-03	3	45.09	27.94	39.37	44.84
3012-04	4	59.06	41.91	53.34	58.81
3012-05	5	73.03	55.88	67.31	72.78
3012-06	6	87.00	69.85	81.28	86.75
3012-08	8	114.94	97.79	109.22	114.69
3012-10	10	142.88	125.73	137.16	142.63
3012-12	12	170.82	153.67	165.10	170.57

Materials

- **Shield** : Brass With Nickel Plated.
- **Housing** : Engineering Thermoplastic.
Flammability Rating UL 94V-0.
- **Contacts** : 1) Flat Pins : 0.35mm Thickness Phosphor Bronze.
Gold Plating Over Nickel In Contact Area.
Tin Plating Over Nickel In Solder Area.
2) Round Pins : 0.46mm Diameter Phosphor Bronze.
Gold Plating Over Nickel.

Ordering Information



- Option : (1) With or Without Different Grounding Tabs.
(2) More Grounding Pin Spacings.