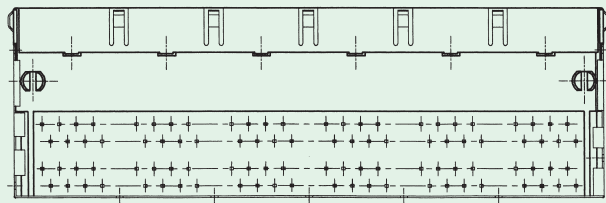
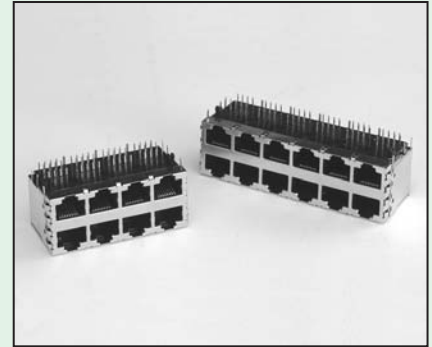
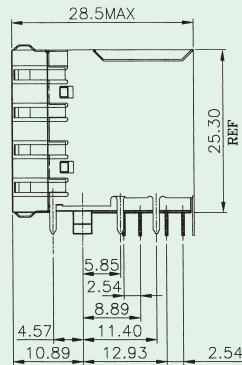
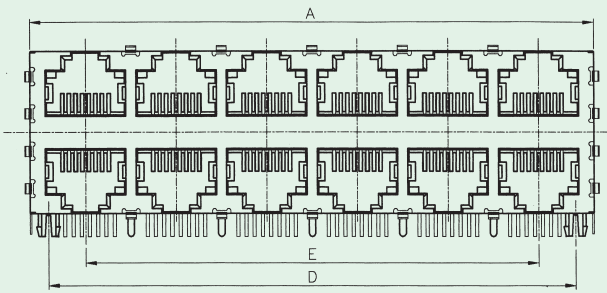




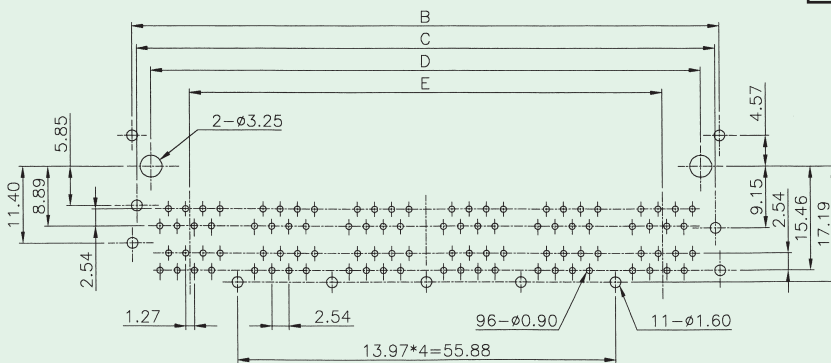
Double Level PCB Jack

KINSUN



PCB Layout / Top View

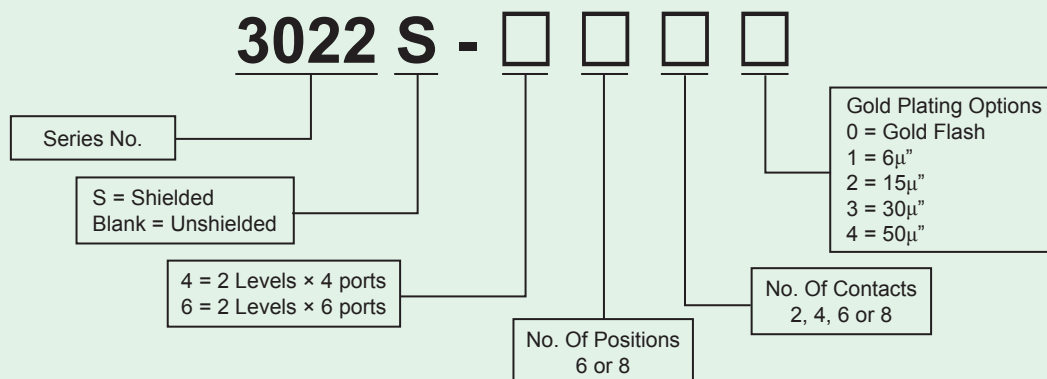
No. of Ports	Dimensions				
	A	B	C	D	E
8	59.19	58.92	57.59	53.34	41.91
12	87.13	86.86	85.53	81.28	69.85



Materials

- **Shield** : Brass With Nickel Plated or Stainless Steel.
- **Housing** : Engineering Thermoplastic.
Flammability Rating UL 94V-0.
- **Contacts** : Phosphor Bronze.
- **Plating** : Gold Plating Over Nickel In Contact Area.
Tin Plating Over Nickel In Solder Area.

Ordering Information



Options : (1) CAT.5 or CAT.3.
(2) With or Without Different Grounding Tabs.