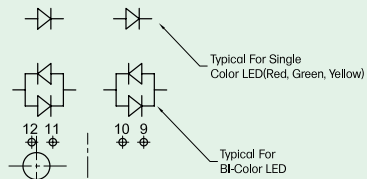
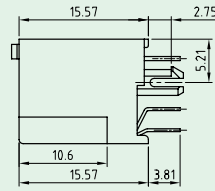
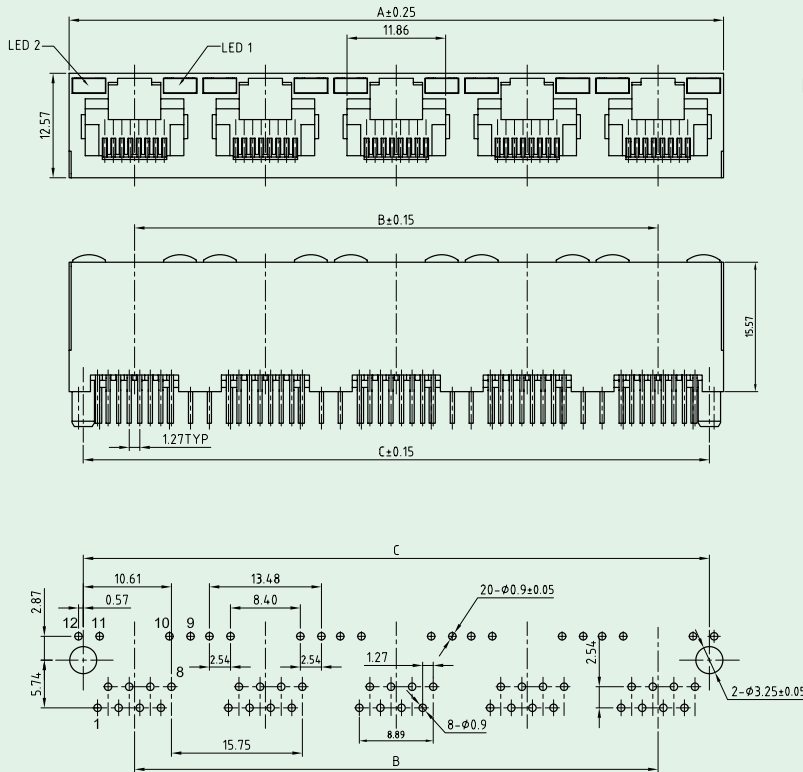


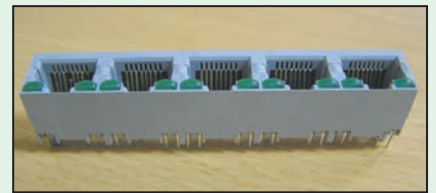


With LED PCB Jack (Top Entry, Multi-Port)

KINSUN



LED Schematic



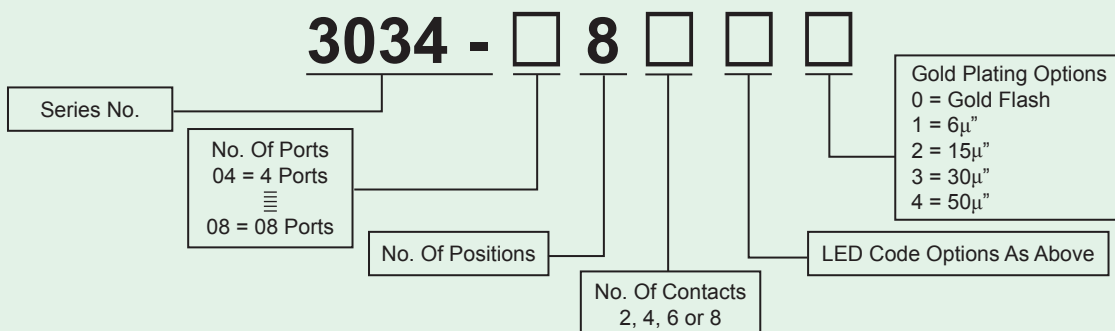
Code	LED 2 (LEFT)	LED 1 (RIGHT)
0	No LED	No LED
1	Yellow	Green
2	No LED	Green
3	Green	Yellow
4	Green	Green
5	Yellow	Yellow
6	Yellow / Green	Yellow / Green
7	Green / Red	Green / Red
8	Yellow / Green	Yellow

Part No.	No. of Ports	Dimensions		
		A	B	C
3034-04	4	63.00	47.25	59.59
3034-05	5	78.75	63.00	75.34
3034-06	6	94.50	78.75	91.10
3034-08	8	126.00	110.25	122.60

Materials

- **Housing** : Engineering Thermoplastic.
Flammability Rating UL 94V-0.
- **Contacts** : Phosphor Bronze.
- **Plating** : Gold Plating Over Nickel In Contact Area.
Tin Plating Over Nickel In Solder Area.

Ordering Information



※ Shielded Type Will Be Available Under Your Confirmation.