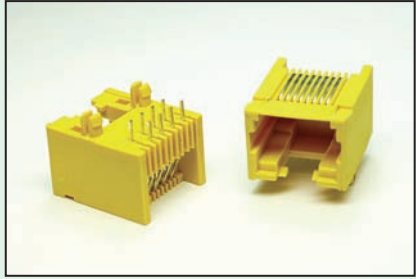
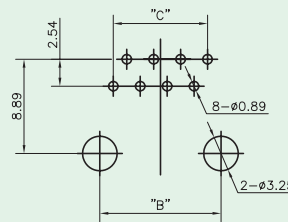
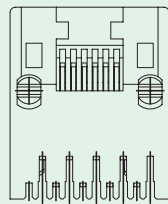
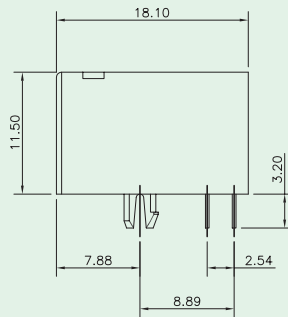
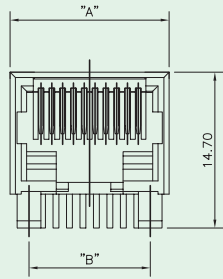
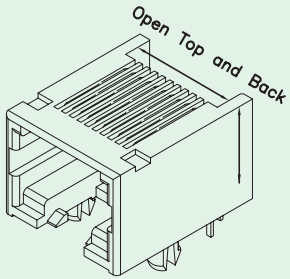




Side Entry PCB Jack (Very Low Profile, Unshielded)



RECOMMEND P.C.B. LAYOUT

No. Of Positions	No. Of Contacts	Dimensions		
		A	B	C
6	6/4/2	12.96	10.16	6.35
8	8/10	15.00	11.43	8.89

Materials

- **Plastic Housing** : Engineering Thermoplastic.
Flammability Rating UL 94V-0.
- **Contacts** : Phosphor Bronze.
- **Plating** : Gold Plating Over Nickel In Contact Area.
Tin Plating Over Nickel In Solder Area.

Ordering Information

