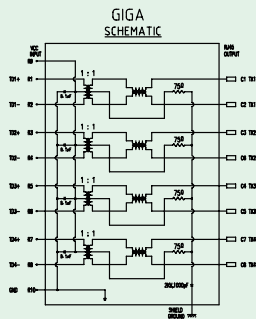
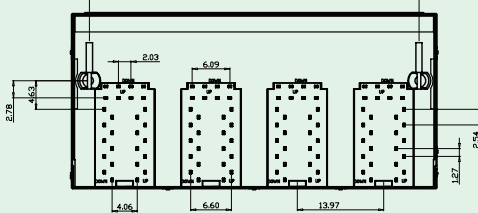
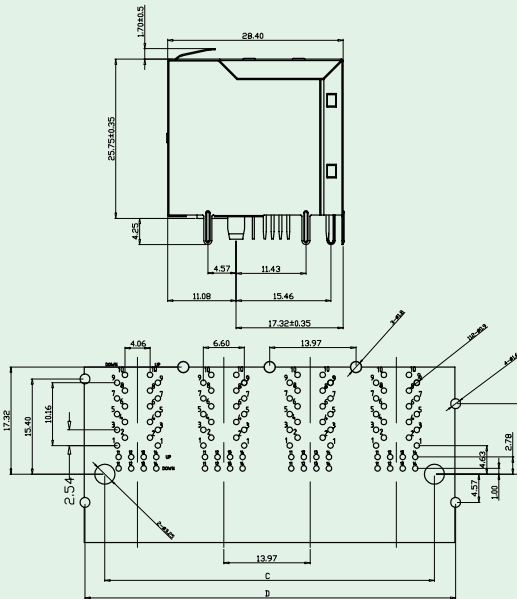
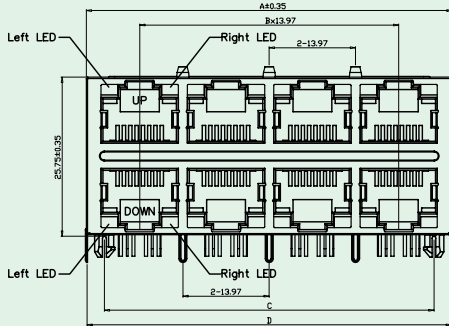


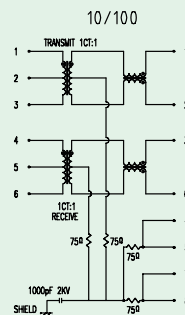


Magnetic Double-Level PCB Jack With LED

KINSUN



	A	B	C	D
2 x 1 ports	17.20	0	11.43	17.00
2 x 4 ports	59.18	3	53.34	58.92
2 x 6 ports	87.12	5	81.28	86.92
2 x 8 ports	115.06	7	109.22	114.86



Code	LED 2	LED 1
0	No LED	No LED
1	Yellow	Green
2	Green	Yellow
3	Green	Green
4	Yellow	Yellow

Materials

- **Shield** : Brass With Nickel Plated.
- **Housing** : Engineering Thermoplastic.
Flammability Rating UL 94V-0.
- **Contacts** : Phosphor Bronze.
- **Plating** : Gold Plating Over Nickel In Contact Area.
Tin Plating Over Nickel In Solder Area.

Ordering Information

