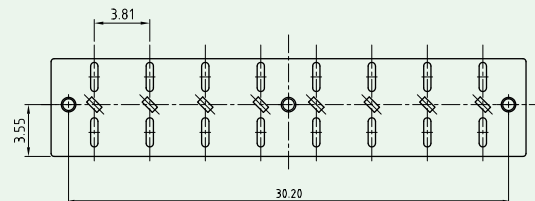
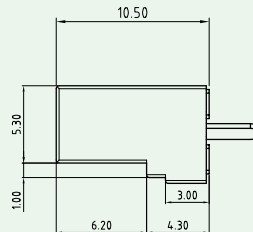
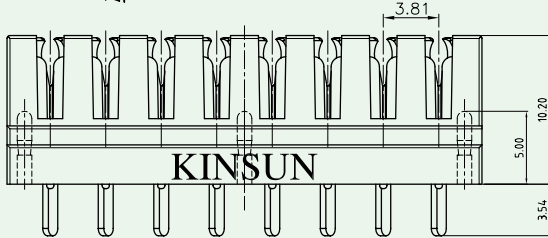
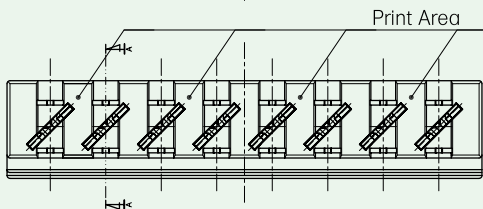
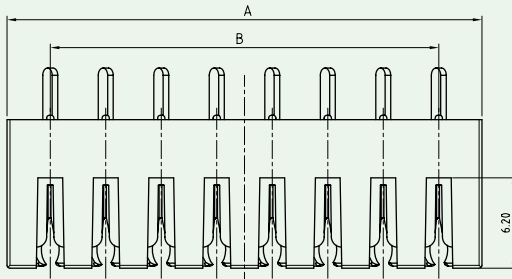
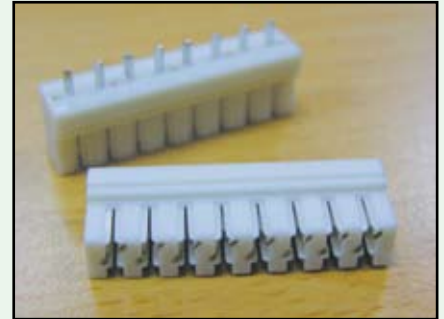
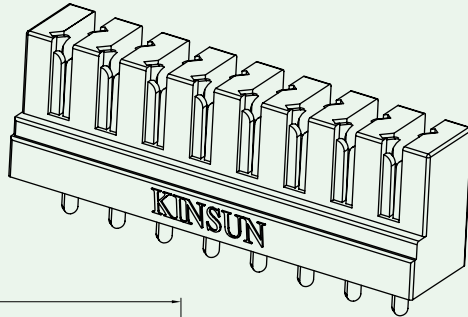


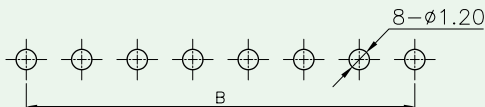


# IDC Block (Krone Type)

**KINSUN**



No. of Positions	Dimensions	
	A	B
4	17.36	11.43
8	32.60	26.67



**PCB Layout**

## Materials

- **Insulator** : PC+30% Glass Fiber.  
Flammability Rating UL 94V-0.  
Standard Color : Ivory.
- **Pins** : 0.5mm Thickness Brass With Tin Plated Over Nickel.



## Ordering Information

**5802 -**

Series No.

No. Of Pins  
4 or 8

- **Color Options On Print Area Are Available.**