

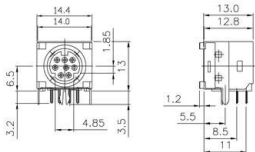
# MINIATURE CIRCULAR DIN JACK

## SCN556 SERIES



SCN 556

### Dimension (m/m)



Circuit	3P	4P	5P	6P	7P	8P	9P
Arrangement of Contact							
P.C.B Layout Jack Bottom View							
P/N	SCN 556S3	SCN 556S4	SCN 556S5	SCN 556S6	SCN 556S7	SCN 556S8	SCN 556S9

### Material

- Insulator : PBT(Black,UL94V-0)
- Contact : Phosphor bronze
- Metal Shell : Copper alloy

### Specification

- Rating : 100VAC 1A (max.)  
12VDC 2A (max.)
- Dielectric withstanding voltage : 500VAC, 60Hz for 1 minute
- Insulation resistance (initial) : 100MΩ (min.) at 500V DC
- Contact resistance (initial) : 30mΩ (max.) at AC100mA(max.) 1KHz
- Insertion & Extraction force :  
Initial : 4.5kgs (max.)  
Extraction force : 0.9 to 3.0kgs

### Ordering Information

SCN556

① ② ③ ④ ⑤ ⑥ ⑦ ⑧

- ① : Series No.
- ② : Type
- S : Receptacle
- ③ : Contact No.  
3 ~ 9
- ④ : Contact plating ("G" is standard)  
T : Tin  
G : Gold flash
- ⑤ : Terminal plating ("T" is standard)  
T : Tin  
G : Gold flash
- ⑥ : Grounding & Shell plating ("N" is standard)  
T : Tin  
N : Nickel
- ⑦ : Housing color code ("B" is standard)  
G : Green L : Purple B : Black
- ⑧ : Special option  
000 : No special option