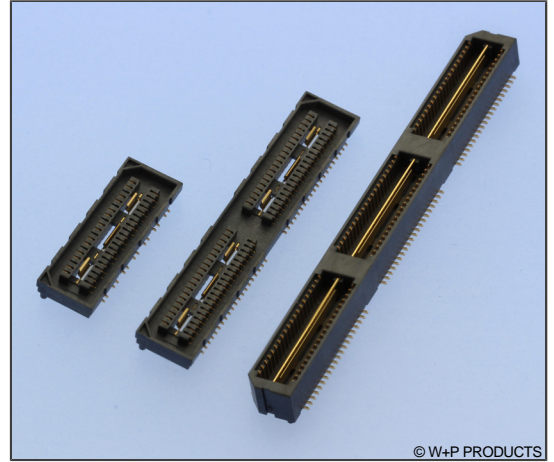


## High Speed SMT Board-to-Board Verbinder RM 0,8mm Board-Abstand 5mm High Speed SMT Board-to-Board Connectors 0.8mm Pitch, Mating Height 5mm

### Technische Daten / Technical Data

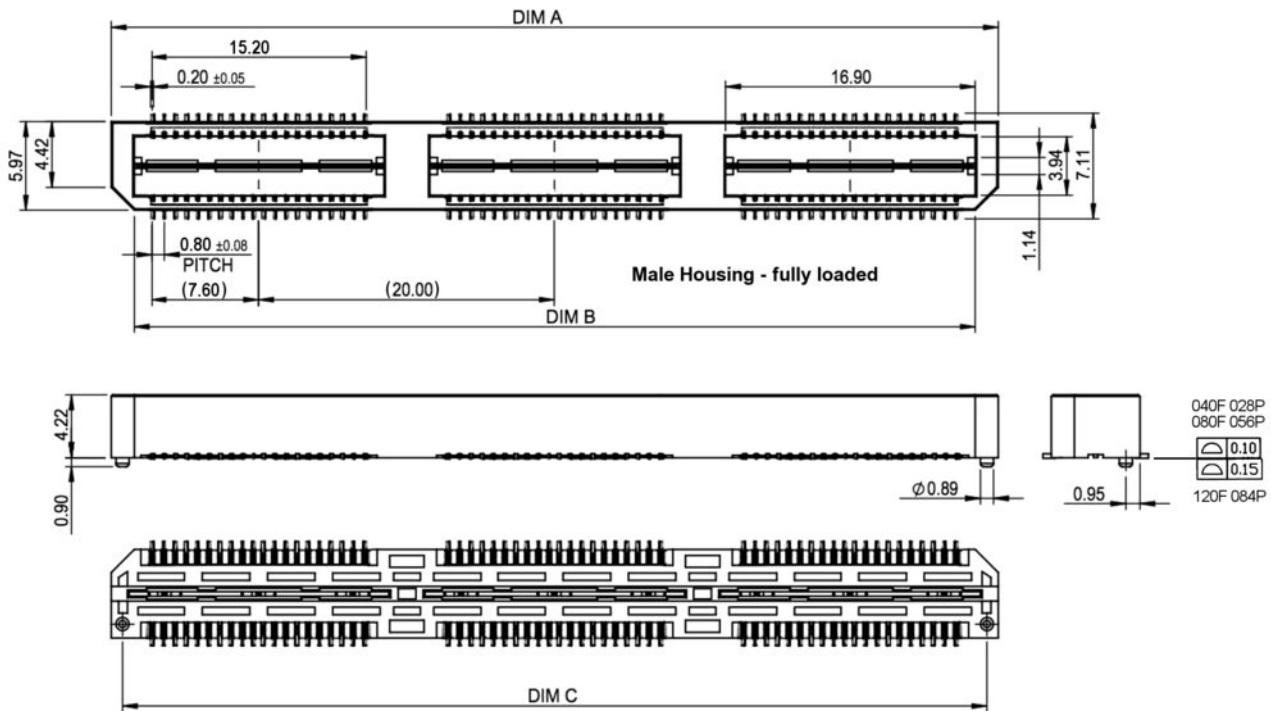
Isolierkörper <i>Insulator</i>	Thermoplast, UL94 V-0, schwarz <i>Thermoplastic, UL94 V-0, black</i>
Kontaktmaterial <i>Contact Material</i>	Kupferlegierung <i>Copper alloy</i>
Kontaktoberfläche	Kontakte (Steckseite): 0,2µm Au über Ni Ground Plane (Steckseite): 0,38µm Au über Ni Lötseite Kontakte und Ground Plane: Au flash über Ni <i>Terminals (mating side): 0,2µm Au over Ni</i> <i>Ground plane (mating side): 0,38µm Au over Ni</i> <i>Solder side pins and ground plane: flash Au over Ni</i>
Contact Surface	
Durchgangswiderstand <i>Contact Resistance</i>	< 15 mΩ
Isolationswiderstand <i>Insulation Resistance</i>	> 5 GΩ
Spannungsfestigkeit <i>Test Voltage</i>	675 V AC
Nennspannung <i>Voltage Rating</i>	225 V AC
Nennstrom	Kontakte: 2 A Ground Plane: 7.8 A
Current Rating	<i>Terminals: 2 A</i> <i>Ground Plane: 7.8 A</i>
Temperaturbereich <i>Temperature Range</i>	-55 °C ... +125 °C
Mechanische Lebensdauer <i>Mechanical Life</i>	100 Steckzyklen <i>100 mating cycles</i>
Verarbeitung <i>Processing</i>	260 °C für 5s max. <i>260 °C for 5s max.</i>



© W+P PRODUCTS

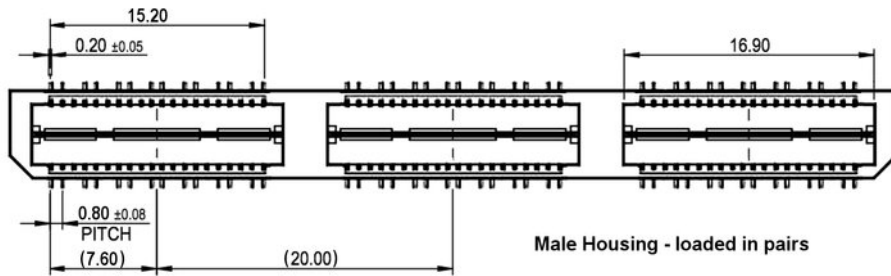
High Speed Performance:  
**14 Gbps** (fully loaded)  
**28 Gbps** (loaded in pairs)

### High Speed Performance: bis zu / up to 28Gbps

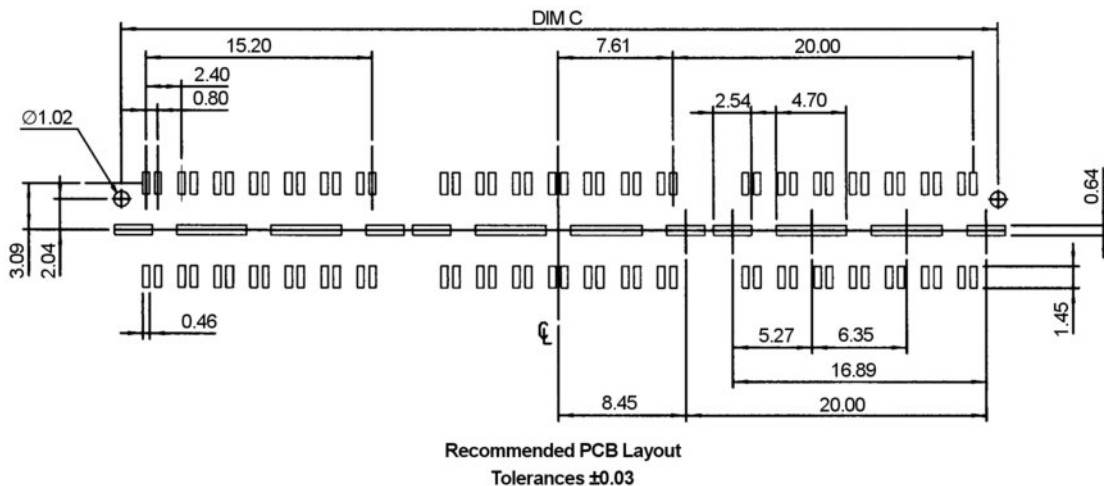
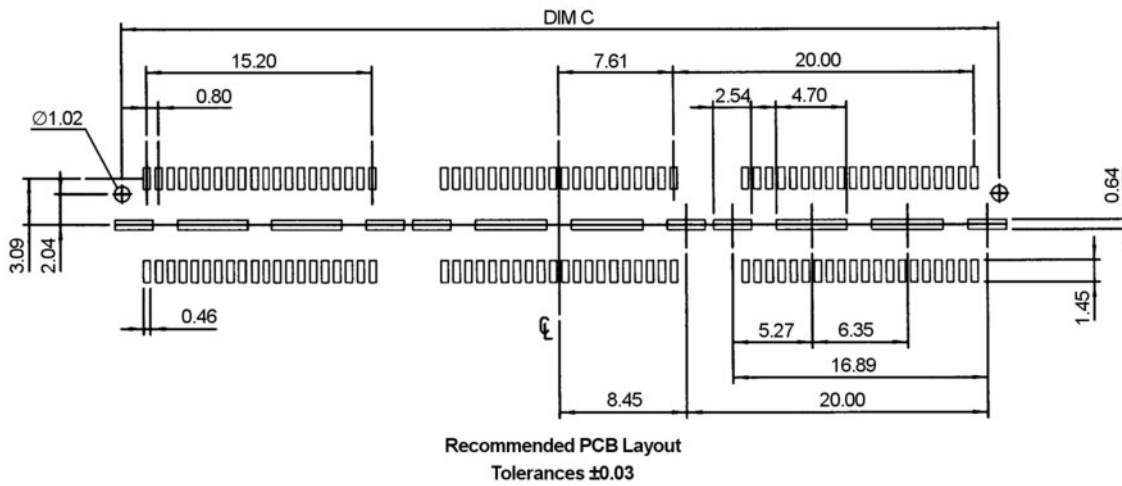


	040F/028P	080F/056P	120F/084P
Dim A	20.00	40.00	60.00
Dim B	16.90	36.90	56.90
Dim C	18.48	38.48	58.48

## High Speed SMT Board-to-Board Verbinder RM 0,8mm Board-Abstand 5mm High Speed SMT Board-to-Board Connectors 0.8mm Pitch, Mating Height 5mm

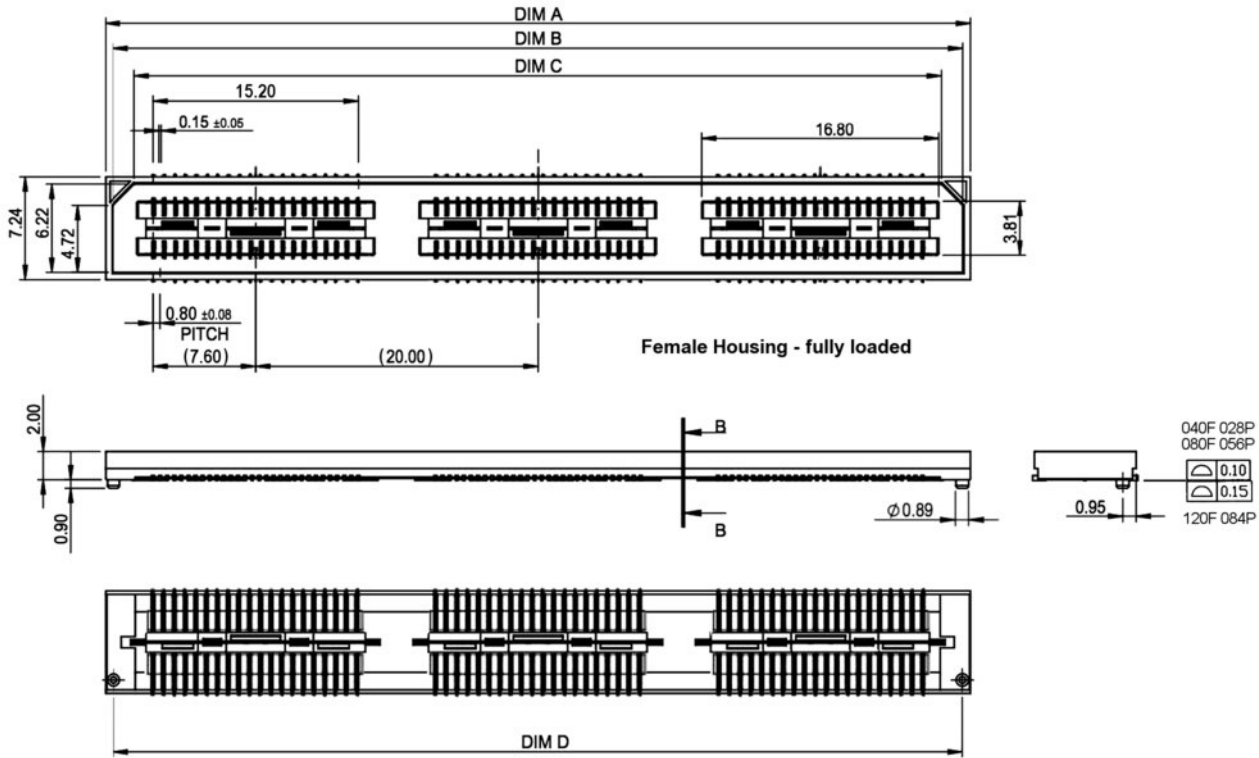


PCB Layouts vollbestückt - paarig bestückt / PCB Layouts fully loaded - loaded in pairs

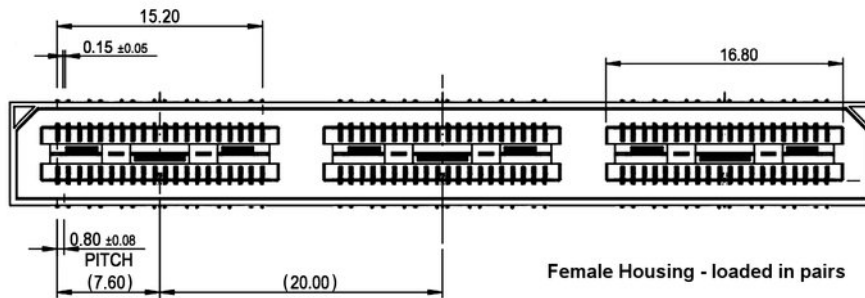


Series	Type	Contacts*	Plating	Locating Pegs	Package
<b>5088</b>	<b>01</b> 01 Male	<b>056P</b> Fully Loaded Vollbestückt 040F 080F 120F Loaded in pairs Paarweise bestückt 028P 056P 084P	<b>108</b> 108 Sel. Au / Au 0.20µm	<b>10</b> 10 Mit Loc. Pegs With Loc. Pegs	<b>FTR</b> FTR Tape & Reel mit Film Pad Tape & Reel with Film Pad

## High Speed SMT Board-to-Board Verbinder RM 0,8mm Board-Abstand 5mm High Speed SMT Board-to-Board Connectors 0.8mm Pitch, Mating Height 5mm

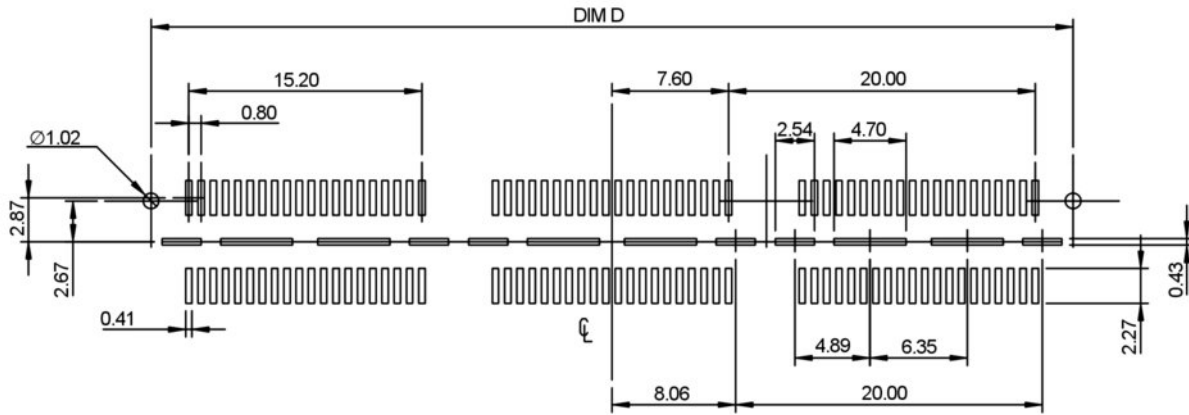


	040F/028P	080F/056P	120F/084P
Dim A	21.27	41.27	61.27
Dim B	20.17	40.17	60.17
Dim C	17.17	37.17	57.17
Dim D	20.13	40.13	60.13

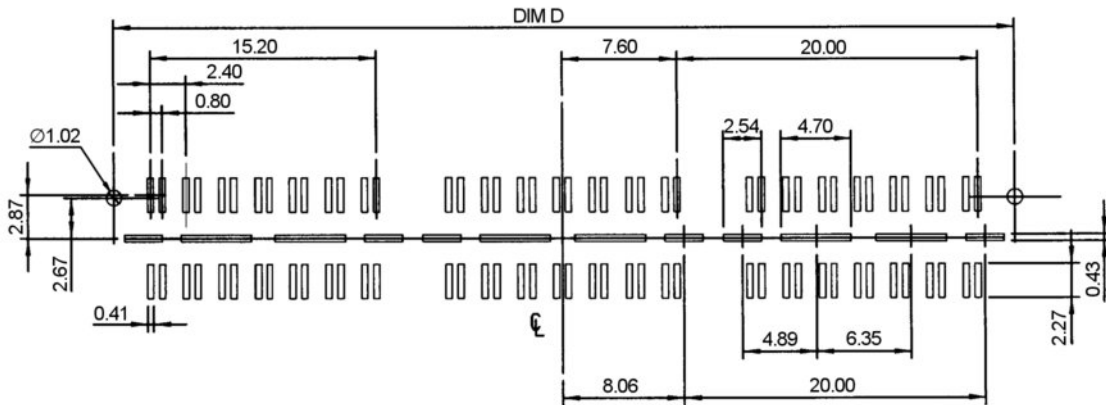


## High Speed SMT Board-to-Board Verbinder RM 0,8mm Board-Abstand 5mm High Speed SMT Board-to-Board Connectors 0.8mm Pitch, Mating Height 5mm

PCB Layouts vollbestückt - paarig bestückt / PCB Layouts fully loaded - loaded in pairs



Recommended PCB Layout  
Tolerances  $\pm 0.03$



Recommended PCB Layout  
Tolerances  $\pm 0.03$

Series	Type	Contacts*	Plating	Locating Pegs	Package
<b>5088</b>	<b>02</b> 02 Female	<b>056P</b> Fully loaded Vollbestückt 040F 080F 120F Loaded in pairs Paarweise bestückt 028P 056P 084P	<b>108</b> 108 Sel. Au / Au 0.20 $\mu$ m	<b>10</b> 10 Mit Loc. Pegs With Loc. Pegs	<b>FTR</b> FTR Tape & Reel mit Film Pad Tape & Reel with Film Pad

\* Dies ist ein **Bestellbeispiel** -  
bitte durch Ihre Spezifikationen ersetzen.  
\* This is an **order example** -  
please replace by your specifications.