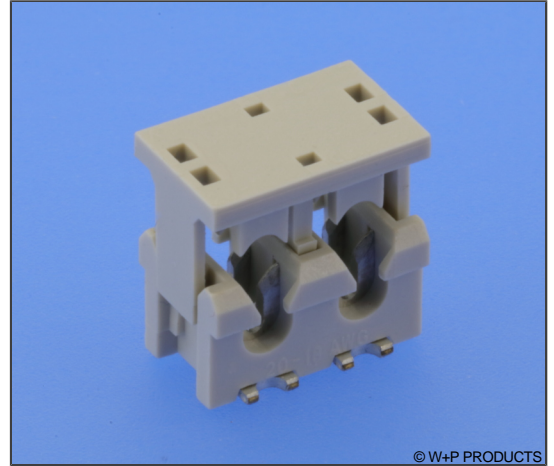


5261

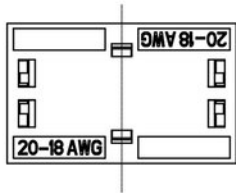
SMT LED IDC-Verbinder RM 4mm SMT LED IDC Connectors 4mm Pitch

Technische Daten / Technical Data

Isolierkörper	Thermoplast, nach UL94 V-0
Insulator	Thermoplastic, rated UL94 V-0
Farbe	Grau
Colour	Grey
Kontaktmaterial	Kupferlegierung
Contact Material	Copper alloy
Aderquerschnitt	AWG 20-18 (Litze)
Applicable wire Gauge	AWG 20-18 (stranded wire)
Durchgangswiderstand	< 20 mΩ
Contact Resistance	< 20 mΩ
Isolationswiderstand	> 1000 MΩ
Insulation Resistance	> 1000 MΩ
Spannungsfestigkeit	1 kV AC
Test Voltage	1 kV AC
Nennspannung	320 V AC/DC
Voltage Rating	320 V AC/DC
Nennstrom	9 A
Current Rating	9 A
Temperaturbereich	-40 °C ... +125 °C
Temperature Range	-40 °C ... +125 °C
Verarbeitung	260 °C max. für 3-5s
Processing	260 °C max. for 3-5s

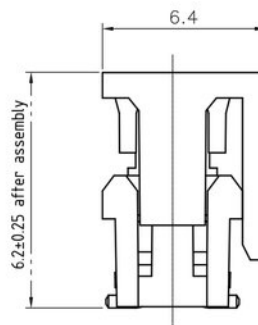
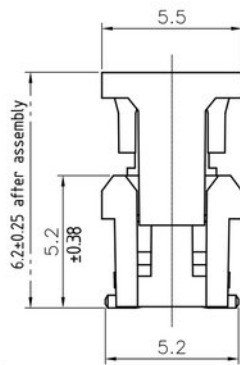
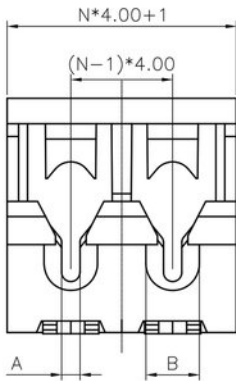


© W+P PRODUCTS

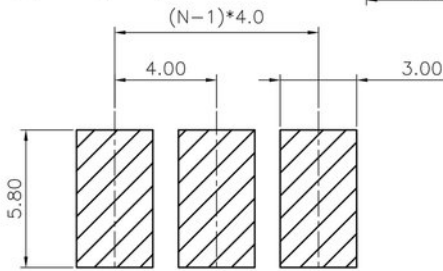


Wire Through Hole

Wire Stop



N=No. of positions



RECOMMENDED PCB LAYOUT
TOLERANCE=±0.05mm

(Table A)

Wire Gauge	Wire OD(Insulation)	A(mm)	B(mm)
AWG #20	Ø1.6-2.1mm	0.60	2.1
AWG #18		0.72	

Series **5261** — **Contacts*** **02** (01/02/03) — **AWG*** **18** (20 AWG 20, 18 AWG 18) — **Type*** **0** (0 Durchgangstyp Wire through, 1 Endtyp Wire stop) — **Plating** **50** (50 Sn) — **Package** **TR** (TR Tape&Reel)

* Dies ist ein **Bestellbeispiel** - bitte durch Ihre Spezifikationen ersetzen.
 * This is an **order example** - please replace by your specifications.