

## Getting started with your TC-XX-PR-59

### Package

Your package with the TC-XX-PR-59 controller should consist of the following:

1. Controller PCB
2. Installation CD
3. TC-NTC-1, ntc-sensor
4. TC-WIRE3-PR-59

For a description of where to connect power/communication/load etc, please see product drawing on your installation CD.

---

### Starting up

1. Install the software onto your computer
2. Connect power, communication, sensor and your load(s) to the controller.
3. When everything is connected you can power up the controller and start the software on your computer.
4. To establish a connection between software and controller first enter SETUP-GLOBAL SETUP and choose the proper comport, then enter REGULATOR-CONNECT to establish a connection between software and controller.

You should now see online information from the controller on your screen.

To retrieve the settings that are in the controller enter REGULATOR-GET PARAMETERS. The software will then read the settings in the controller.

---

### Getting around the software interface

There are six tabs that show runtime data and programming areas for the controller (Base, Runtime, Alarm, Fan, Sensor, Regulator)

You can change the settings for the controller by altering the settings in the different programming areas. To download your settings to the controller enter REGULATOR-DOWNLOAD PARAMETERS.

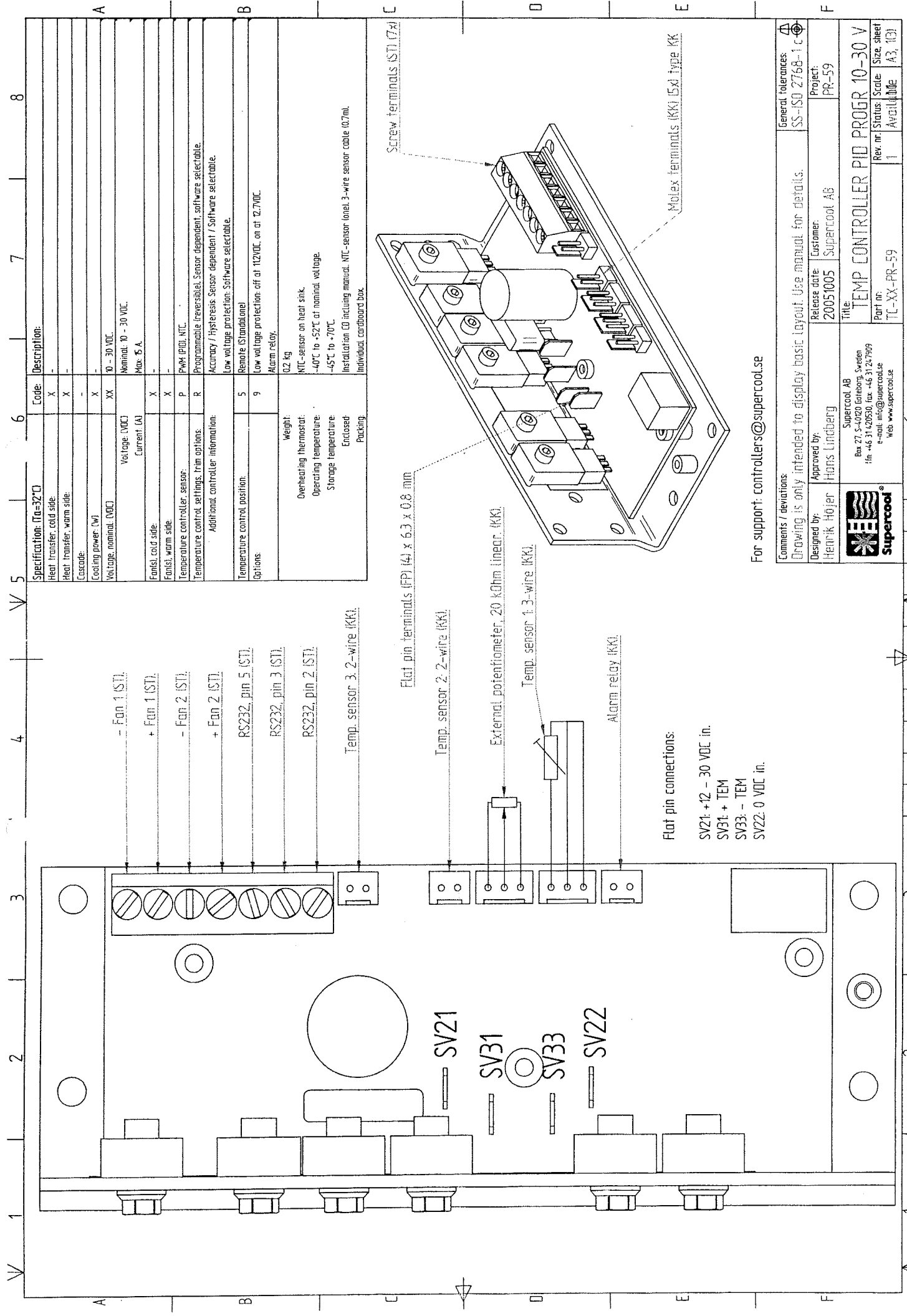
#### **NOTE!**

**TO STORE THE SETTINGS PERMANENTLY IN THE CONTROLLER YOU NEED TO DO A SAVE TO FLASH. OTHERWISE YOUR SETTINGS WILL BE LOST AFTER POWER DOWN!**

Save to flash can be found in the regulator menu.

For more detailed information about see the manual which is located in the program directory.





Code	Description
X	Heat transfer, cold side
X	Heat transfer, warm side
-	Cascade
X	Cooling power (W)
XX	Voltage, nominal (VDC)
	10 - 30 VDC
	Nominal: 10 - 30 VDC
	Max: 5 A
X	Fans, cold side
X	Fans, warm side
P	Temperature controller, sensor
R	Temperature control settings, trim options
	Additional controller information:
	Programmable (reversible), Sensor dependent, software selectable.
	Accuracy / Hysteresis Sensor dependent / Software selectable.
	Low voltage protection: Software selectable.
	Remote (Strandbøl)
5	Low voltage protection: off at 112VDC, on at 127VDC.
9	Alarm relay.
	Weight: 0.2 kg
	Overheating thermostat: NTC-sensor on heat sink.
	Operating temperature: -40°C to +52°C at nominal voltage.
	Storage temperature: -45°C to +70°C
	Installation (C) including manual, NTC-sensor (total, 3-wire sensor cable 0.7m), Individual cardboard box.

For support: [controllers@supercool.se](mailto:controllers@supercool.se)

Comments / deviations:  
 Drawing is only intended to display basic layout. Use manual for details.

General tolerances:  
 SS-ISO 2768-1 C

Designed by: Henrik Höjer  
 Approved by: Hans Lindberg

Release date: 20051005  
 Customer: Supercool AB

Project: PR-59

Title: TEM CONTROLLER PID Progr 10-30 V

Part nr: TC-XX-PR-59  
 Rev. nr: 1  
 Status: Scale: 1  
 Availability: A3, (B)

Supercool AB  
 Box 27, S-4020 Göteborg, Sweden  
 tfn: +46 31 420500, fax: +46 31 217909  
 e-mail: [info@supercool.se](mailto:info@supercool.se)  
 Web: [www.supercool.se](http://www.supercool.se)