



### SPECIFICATIONS

- RATING :** 2A/36VDC
  - ELECTRICAL LIFE :** 200,000 make-and-break cycles at full load
  - MECHANICAL LIFE :** 1,000,000 cycles
  - INSULATION RESISTANCE :** 1,000 MΩ min. at 500VDC
  - DIELECTRIC STRENGTH :** 2,000V RMS @ sea level
  - CONTACT RESISTANCE :** 50 mΩ max.
  - OPERATION TEMPERATURE :** -20°C~+70°C
  - TRAVEL:** About 2.0±0.20mm
  - OPERATION PRESSURE :** 4.5N±1.5N
  - INGRESS PROTECTION :** IP67
  - TORQUE :** 11.5 kgf · cm
  - THICKNESS :** 8.0mm (Max.)
- Current limiting resistor is required to limit LED forward current to 20mA.**

### MATERIALS

- BUSHING :** Aluminum alloy
- BASE :** PBT (Blue UL 94-V0)
- ACTUATOR :** PC (Translucent UL 94-V2)
- CAP :** Aluminum alloy
- SPRING :** Steel.
- SEALING :** Sillicone (Translucent).
- O-Ring :** Sillicone (Translucent).
- TERMINAL :** Brass ,Gold plated.
- CONTACT :** Silver alloy.
- HEX NUT :** Brass (Nickel plated).

### HOW TO ORDER

IP 67  
ACCORDING TO  
EN 60529:1991+A1:2001  
IEC 60529:2001



MODEL NO.    BODY TYPE    BUTTON TYPE    LIGHT TYPE    LED COLOR    TERMINAL SHAPE    TERMINAL PLATING    LED VOLTAGE

**MPB16** — [ ] — [ ] — [ ] — [ ] — [ ] — [R] — [ ] [V]

Body type  
**CA** AL alloy (Natural Anodized)  
**CB** AL alloy (Black Anodized)

Button type  
**R** Round

Light type  
**E** Ring  
**P** Power logo

Terminal shape  
**J** Solder Terminal  
**T1** Flying lead terminal  
 L=500mm

Terminal plating  
**R** Gold flash

Accessories

Resistance (About LED Voltage)	
0	Without Resistance
3V	LED input 3 VDC
6V	LED input 6 VDC
12V	LED input 12 VDC
24V	LED input 24 VDC

LED color

ITEM NO	COLOR
0	Without LED
1	White
3	Red
5	Yellow
6	Green
7	Blue

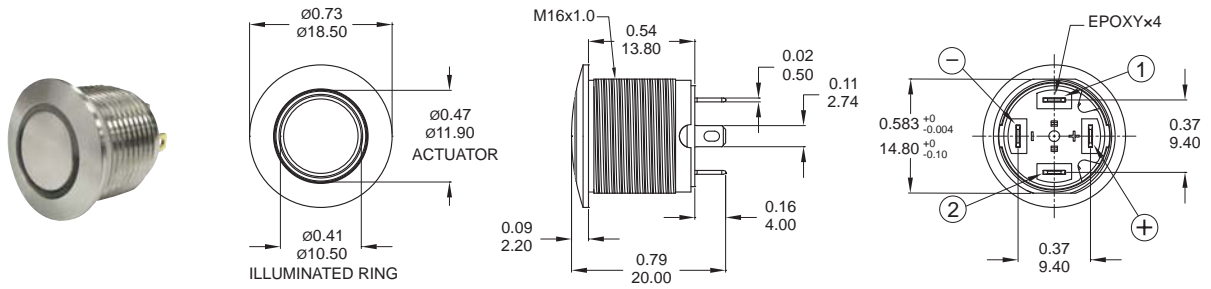
EXAMPLE:  
 MPB16-CARE-0-JR-0 (Without LED)  
 MPB16-CARE-6-JR-3V  
           LED color           LED voltage





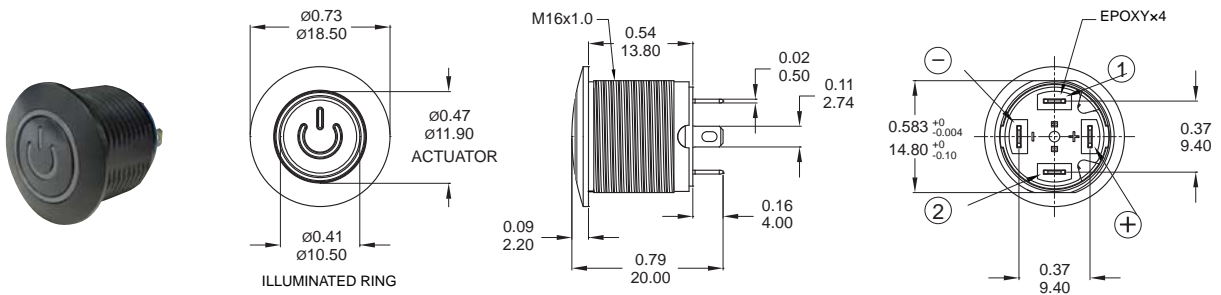
## DIMENSION

### E Ring (Fixed)



Part No. Shown : MPB16-CARE-□-JR-0

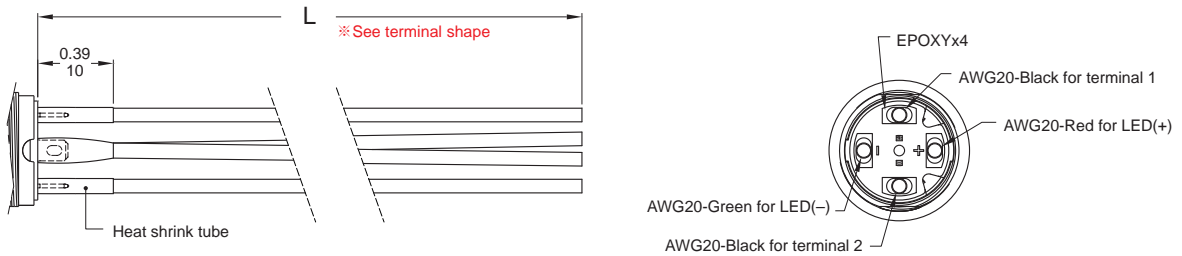
### P Power logo



Part No. Shown : MPB16-CBRP-□-JR-0

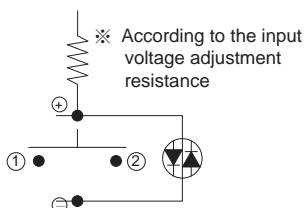
### Wire (Flying lead Terminals)

※ Wire=Multi-wire lead AWG20,section 0.6mm<sup>2</sup>,UL approved (Black / Red / Green)

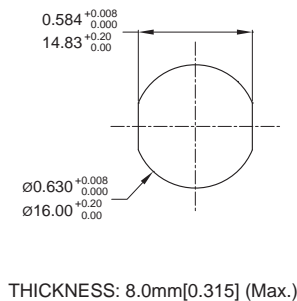


## SCHEMATIC / PANEL CUTOUT / HARDWARE

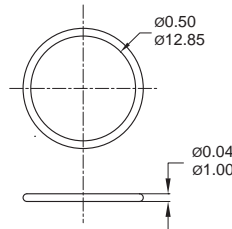
### SCHEMATIC



### PANEL CUTOUT



### O-RING



### M16 NUT

