



SPECIFICATION:

MAX. CURRENT/VOLTAGE RATING WITH RESISTIVE LOAD:

PA S6/S7	400mA 32VAC-100mA 50VDC-125mA 125VAC 500mA 48VAC - 200 mA 50VDC - 200mA 250VAC.for metal material.
PA L6	100mA 24VDC-life expectancy 200,000 cycles 2A 125VAC-life expectancy 10,000 cycles

INITIAL CONTACT RESISTANCE: 50mΩ max.

INSULATION RESISTANCE: 1GΩ min.at 500VDC.

DIELECTRIC STRENGTH: 1,000 VAC rms.
1,500 VAC rms. for metal material.

ELECTRICAL LIFE AT FULL LOAD:

PA S6/S7	500,000 cycles.
PA L6	200,000 cycles.

OPERATING TEMPERATURE: -30°C to 85°C.

PANEL THICKNESS:

B1 series : 0.8 mm (.031) min. -1.8 mm (.071) max.
B2 series : 1.5 mm (.059) min. -4 mm (.157) max.
B3 series : 3.0±0.25 mm (.118)

TOTAL TRAVEL:

PA S6/S7	1.5 mm(.059)
PA L6	2.5 mm(.098)

OPERATING FORCE: 2N~5N

CONTACT BOUNCE: 10 ms.

MECHANICAL LIFE: 1,000,000 cycles.

TORQUE: 0.5 Nm max.applied to nut,
1.5 Nm max. for metal material.

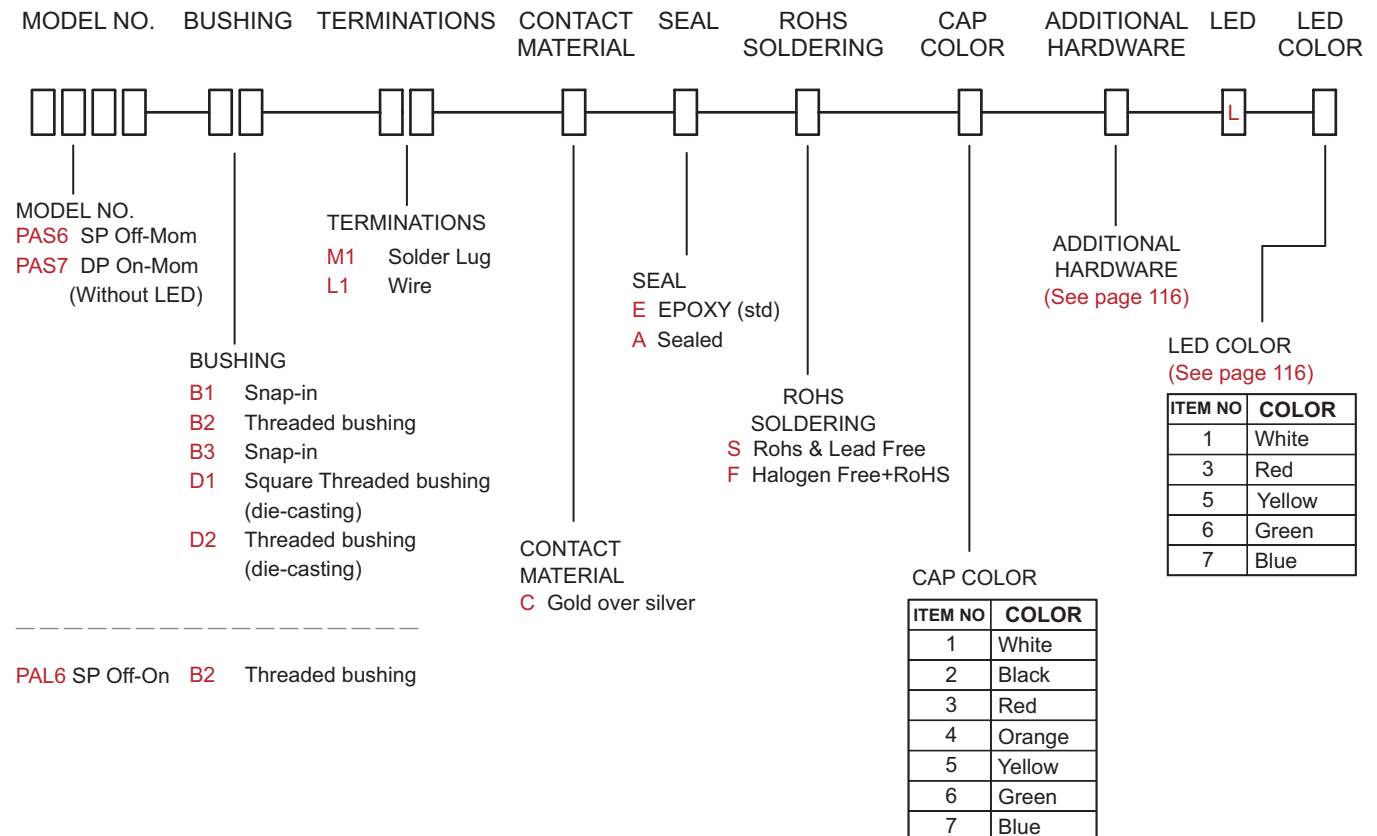
SOLDERING: 350°C max.for 5 seconds.



IP 67
ACCORDING TO
EN 60529:1991+A1:2001
IEC 60529:2001





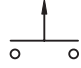


HOW TO ORDER



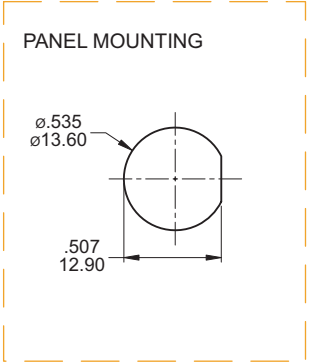
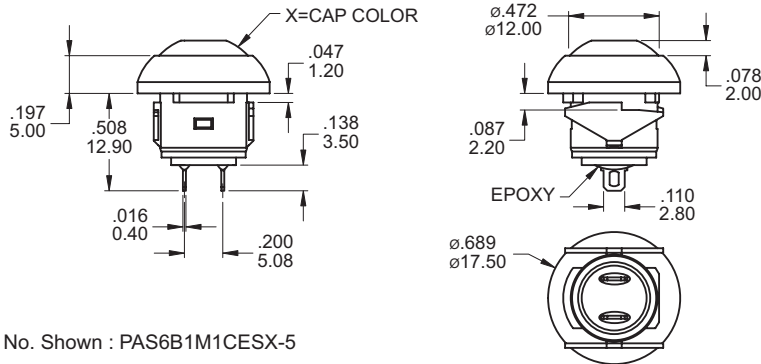
▲ Please kindly note our standard is with flat cap.
If you need round cap, please add "A" before cap color option.

SWITCH FUNCTION

NO. POLES	MODEL NO.	SWITCH FUNCTION		CONNECTED TERMINALS		SCHEMATIC
		POS.1	POS.2	POS.1	POS.2	
						
SP	PAS6	OFF	MOM	OPEN	1-3	
SP	PAS7	ON	OFF(MOM)	1-3	OPEN	
SP	PAL6	OFF	ON	OPEN	1-3	

MOM=MOMENTARY

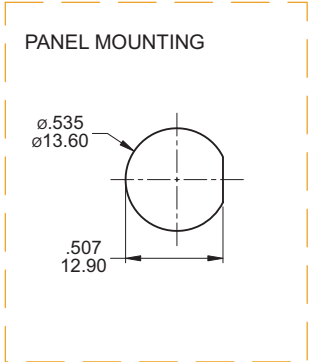
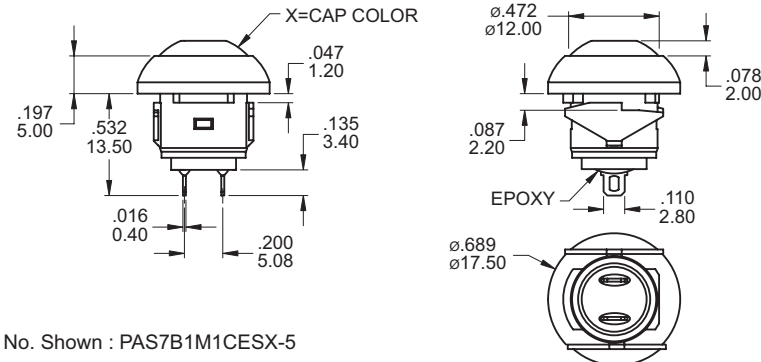
B1



SPDT

Part No. Shown : PAS6B1M1CESX-5

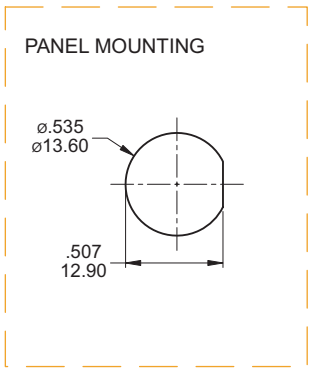
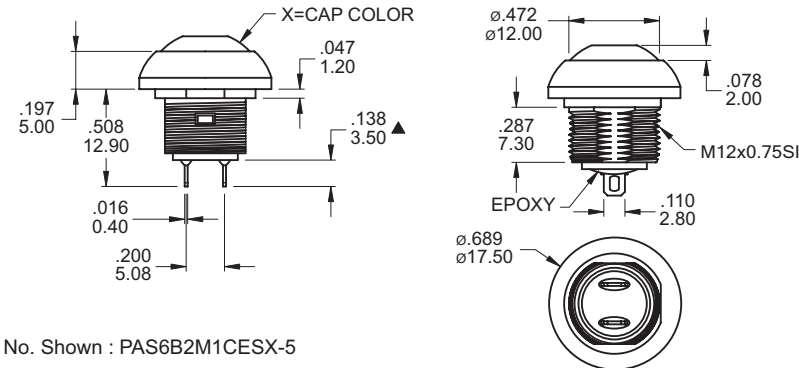
B1



SPDT

Part No. Shown : PAS7B1M1CESX-5

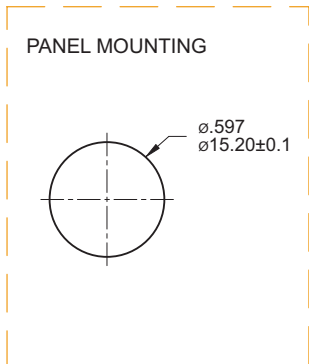
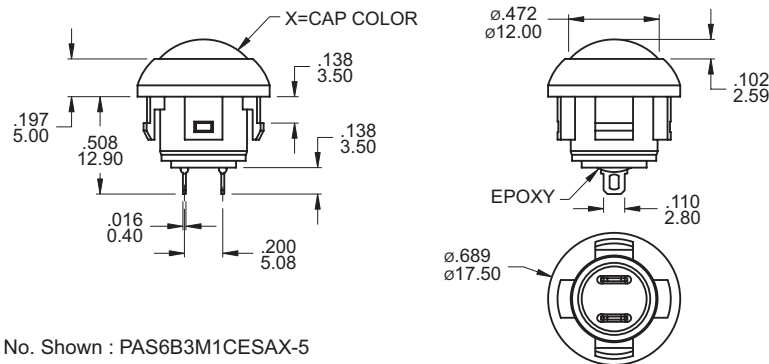
B2



SPDT

Part No. Shown : PAS6B2M1CESX-5

B3



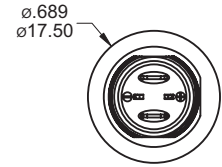
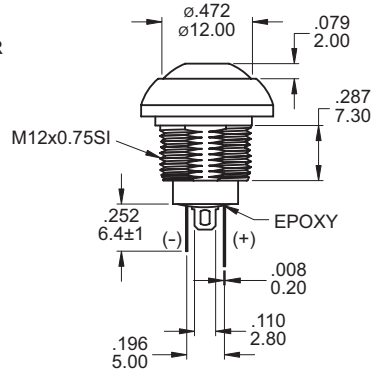
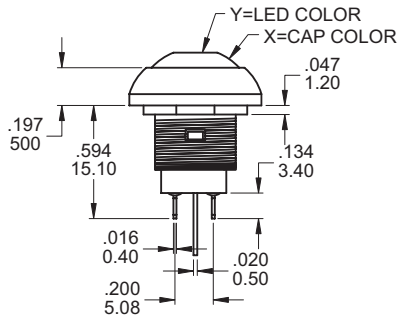
SPDT

Part No. Shown : PAS6B3M1CESAX-5

PA Pushbutton Switches



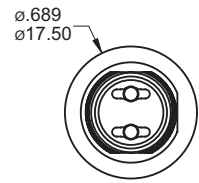
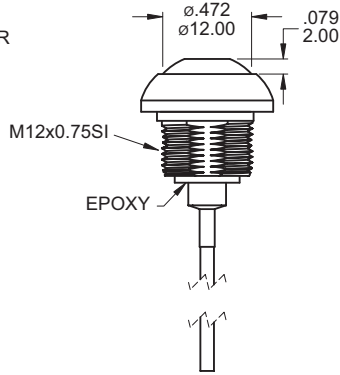
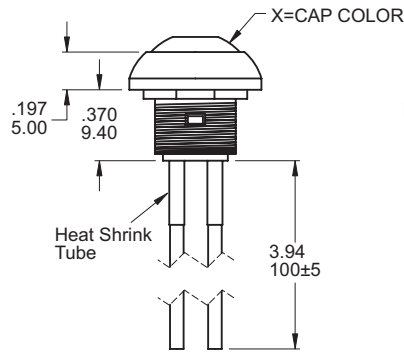
SPDT



Part No. Shown : PAS6B2M1CESX-5LY



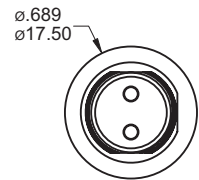
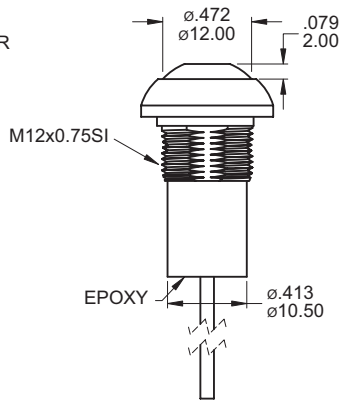
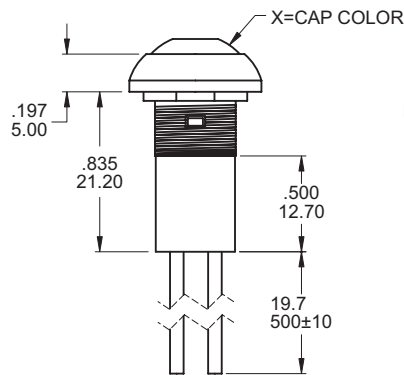
SPDT



Part No. Shown : PAS6B2L3CESX-5



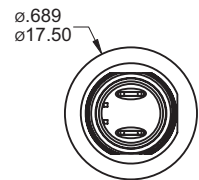
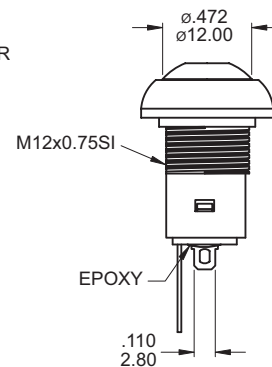
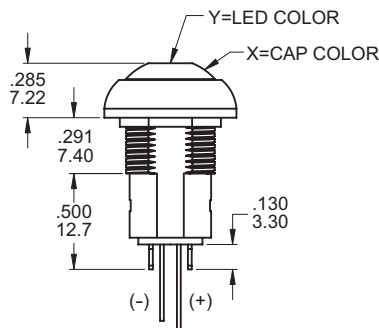
SPDT



Part No. Shown : PAS6L1CASX-5



SPDT



Part No. Shown : PAL6B2M1CESX-5LY

BUSHING PLATING



- PLATING
A Chromium
B Tin-nickel Alloy
C Stain-chromium
D Stain-nickel



Chromium



Tin-nickel Alloy



Stain-chromium

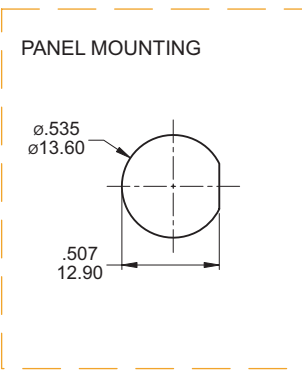
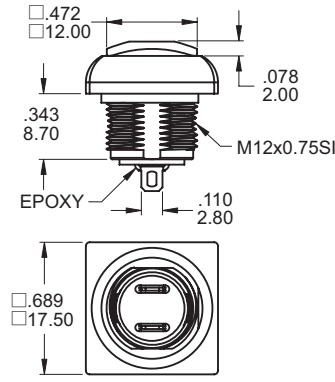
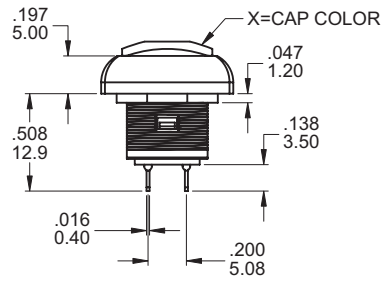


Stain-nickel



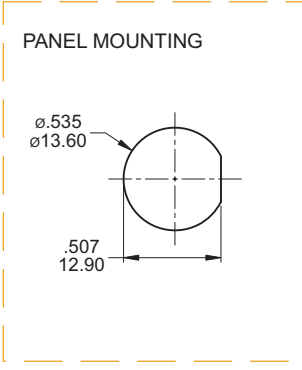
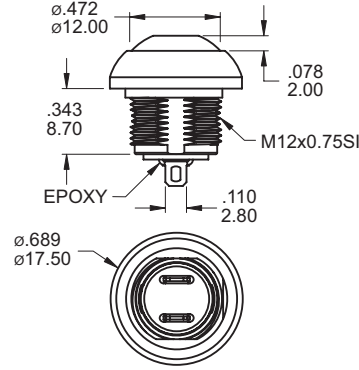
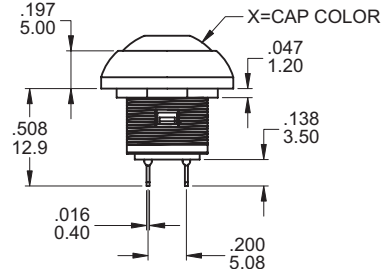
SPDT

Part No. Shown : PAS6D1M1CESX-5



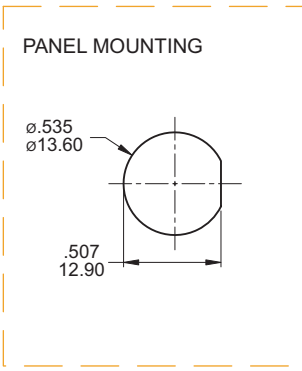
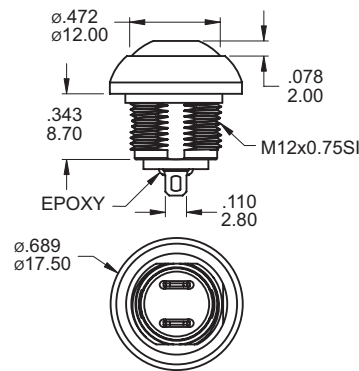
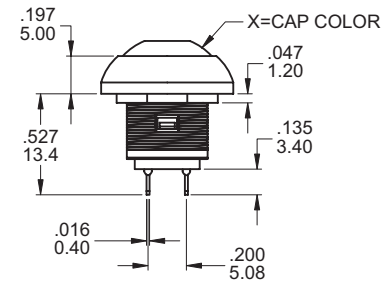
SPDT

Part No. Shown : PAS6D2M1CESX-5



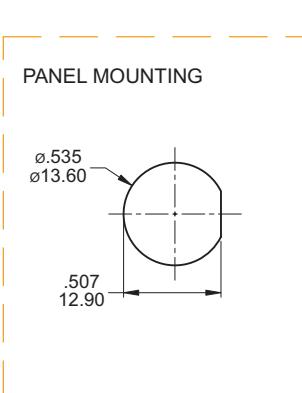
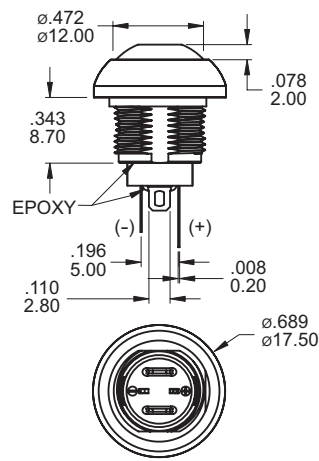
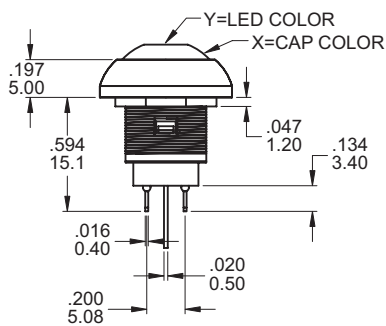
SPDT

Part No. Shown : PAS7D2M1CESX-5



SPDT

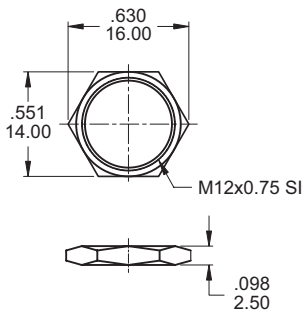
Part No. Shown : PAS6D2M1CESX-5LY



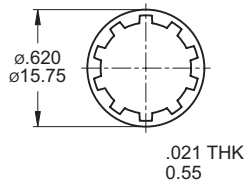
PA Pushbutton Switches

HARDWARE

M12 NUT

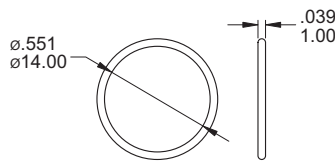


LOCK WASHER HDW12



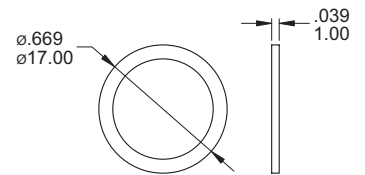
Supplied with B2 / D1 / D2 bushing

O-RING



Supplied with PAL6 and D1,D2 options

RUBBER WASHER

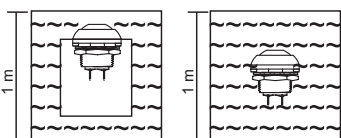


Supplied standard with B1 / B2 / B3 options

WITH LED ELECTRO-OPTICAL DATA

Model No.	Lens Appearance	Color	Electro-optical Data (AT 20mA)				Peak Wavelength	Viewing Angle 2θ 1/2 (deg)	
			Vf (V)		Iv (mcd)				
			Typ.	Max.	Typ.	Max.			
PAS6 & PAS7	Water Clear	White (AT 5mA)	3.2	3.6	250	94	X=0.28 Y=0.29	35°	
		Super Red	1.7	2.6	60	28	660		
		Super Yellow	2.1	2.6	200	94	590		
		Super Green	2.0	2.6	100	42	570		
		Super Blue	3.2	3.6	150	63	470		
		Super Yellow (Super Green)	Y	2.1	2.6	200	94		590
			G	2.0	2.6	80	42		570
		Super Yellow (Super Blue)	Y	2.1	2.6	200	94		590
			B	3.2	3.6	200	94		460
		Super Yellow (Super Red)	Y	2.1	2.6	100	63		590
			R	2	2.6	90	42		630
		Super Red (Super Green)	R	2	2.6	90	42		630
			G	2.0	2.6	90	42		570
		Super Red (Super Blue)	R	2	2.6	90	42		630
B	3.2		3.6	200	94	460			
Super Green (Super Blue)	G	2.0	2.6	100	42	570			
	B	3.2	3.6	200	94	460			
PAL6	Water Clear	White	3.5	4.0	370	—	X=0.32 Y=0.31	80°	
		Super Red	2.0	2.6	85	—	625		
		Super Yellow	2.1	2.6	80	—	590		
		Super Green	2.0	2.6	30	—	575		
		Super Blue	3.5	4	250	—	470		
		Super Yellow (Super Green)	Y	2.0	2.6	40	—		590
			G	2.0	2.6	20	—	570	
		Super Yellow (Super Red)	Y	2.0	2.6	35	—	590	
			R	2.0	2.6	40	—	625	
		Super Red (Super Green)	R	2.0	2.6	50	—	625	
			G	2.0	2.6	13	—	570	
		Super Red (Super Blue)	R	2.0	2.6	50	—	625	
			B	3.2	3.6	200	94	460	

IP 67 for the whole series:
Protected against the effects of immersion up to 1 m water(30mn)



SOLDERING PROCESSES

MANUAL SOLDERING : Use soldering iron of 30 watts, controlled at 350°C approximately 5 seconds while applying solder.

WAVE SOLDERING : Recommended Soldering Temperature : 260 ± 5°C
Duration of Solder Immersion : Max 5 sec.
(PCB is 1.6mm in thickness)

SOLDERING : Vapor phase