

### ● SPECIFICATIONS

CONTACT: Stainless steel

RATING: 50mA, 5VDC

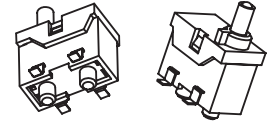
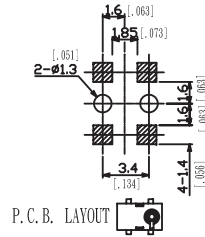
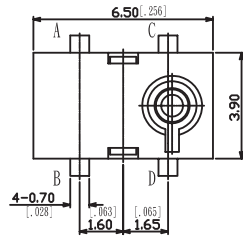
STROKE: 2mm

OPERATING FORCE: 30gf max

CONTACT RESISTANCE: 500mΩ max.

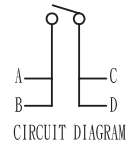
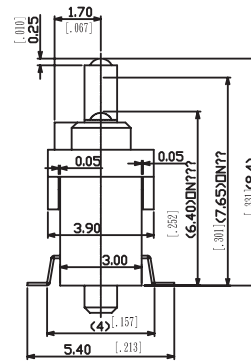
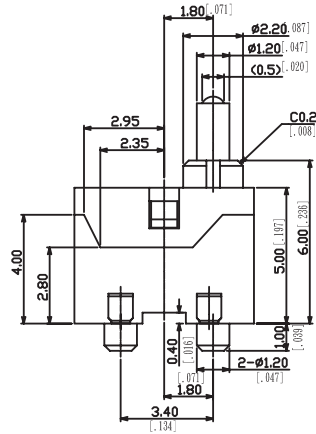


TE-M

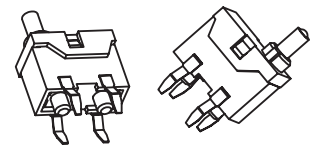
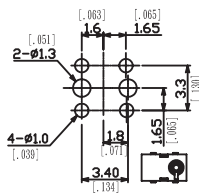
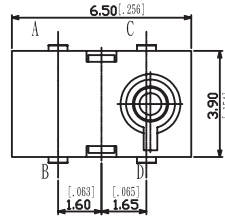


NOTE:

1. ALL DIMENSIONS ARE IN MILLIMETERS, [ ] DIMENSIONS ARE IN INCHS.
2. GENERAL TOLERANCE: ±0.2 mm



TE-H



NOTE:

1. ALL DIMENSIONS ARE IN MILLIMETERS, [ ] DIMENSIONS ARE IN INCHS.
2. GENERAL TOLERANCE: ±0.2 mm

